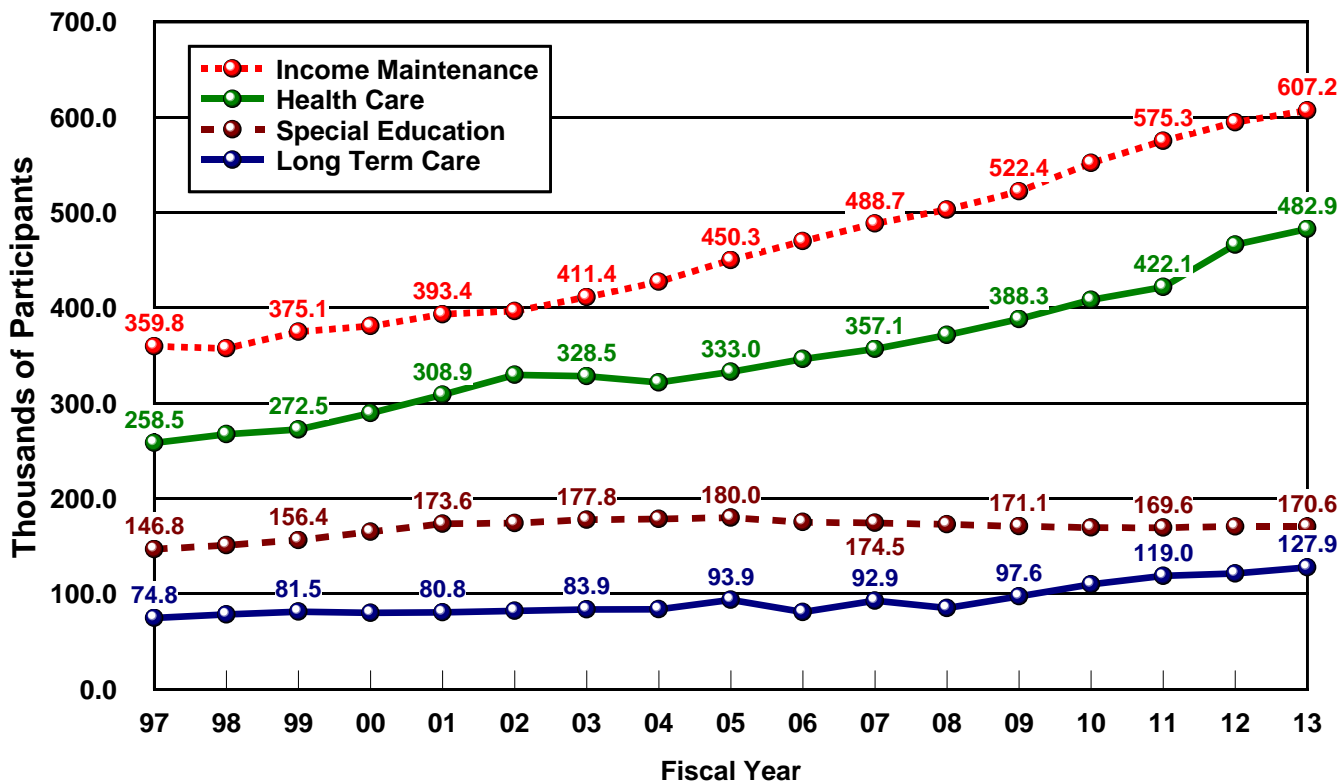


PARTICIPANTS IN VIRGINIA DISABILITY PROGRAMS: 1997-2013



SERVICES AND INCOME MAINTENANCE RECIPIENTS IN 2013

PROGRAM	RECIPIENTS
1. INCOME MAINTENANCE	607,152
Supplemental Security Income (SSI)	118,904
SSI State Supplement	3,138
Social Security Disability Insurance (DI)	211,535
Adult Disabled Child (ADC)	22,829
Veterans' Compensation	110,715
Food Stamps	102,000
Housing and Urban Development (HUD)	38,031

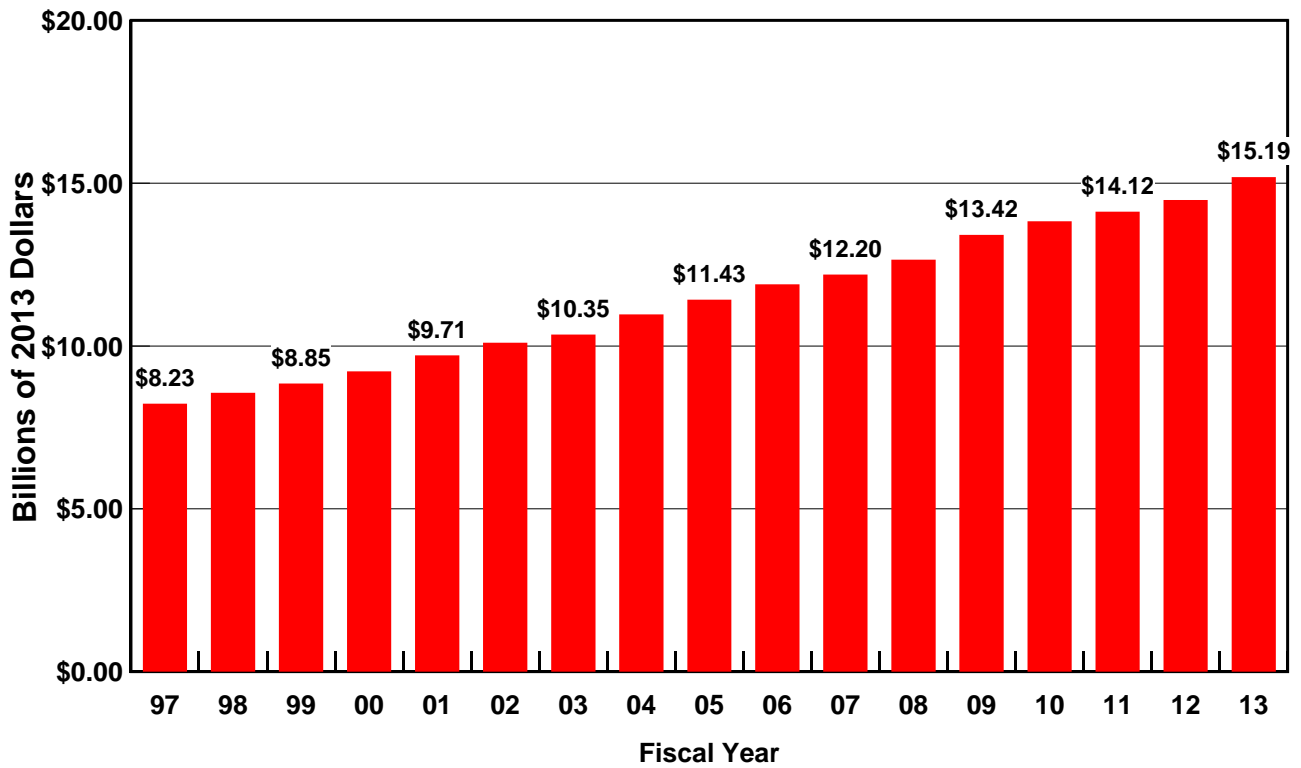
2. HEALTH CARE	482,883
Medicare	234,727
Medicaid	197,146
Veterans' Medical Care	51,010

4. SPECIAL EDUCATION	170,599
-----------------------------	----------------

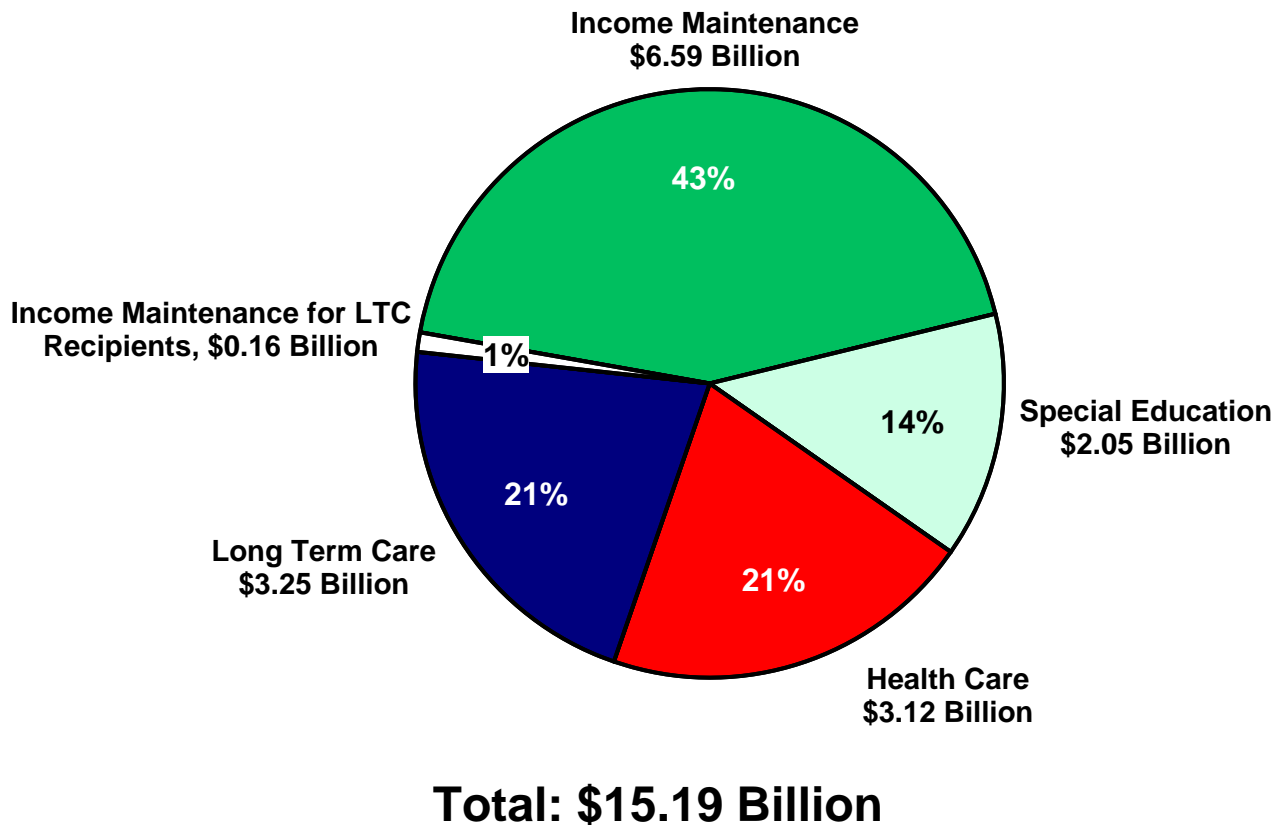
PROGRAM	RECIPIENTS
3. LONG TERM CARE (LTC)	127,856
Community LTC & Related Services	121,472
I/DD State Agency Programs	7,160
Mental Illness State Agency Programs	73,007
Medicaid HCBS Waiver: Physical Disability	7,243
Medicaid Home Health Care	4,772
Medicaid Personal Care	0
Related Services	
Vocational Rehabilitation (VR)	7,933
Independent Living	5,856
Veterans' Rehabilitation	15,501
HUD Construction	0
Institutional LTC	6,384
Nursing Facilities (all disabilities)	4,175
I/DD Institutions	935
Mental Illness Institutions	1,274

Total Recipients: 1,388,490

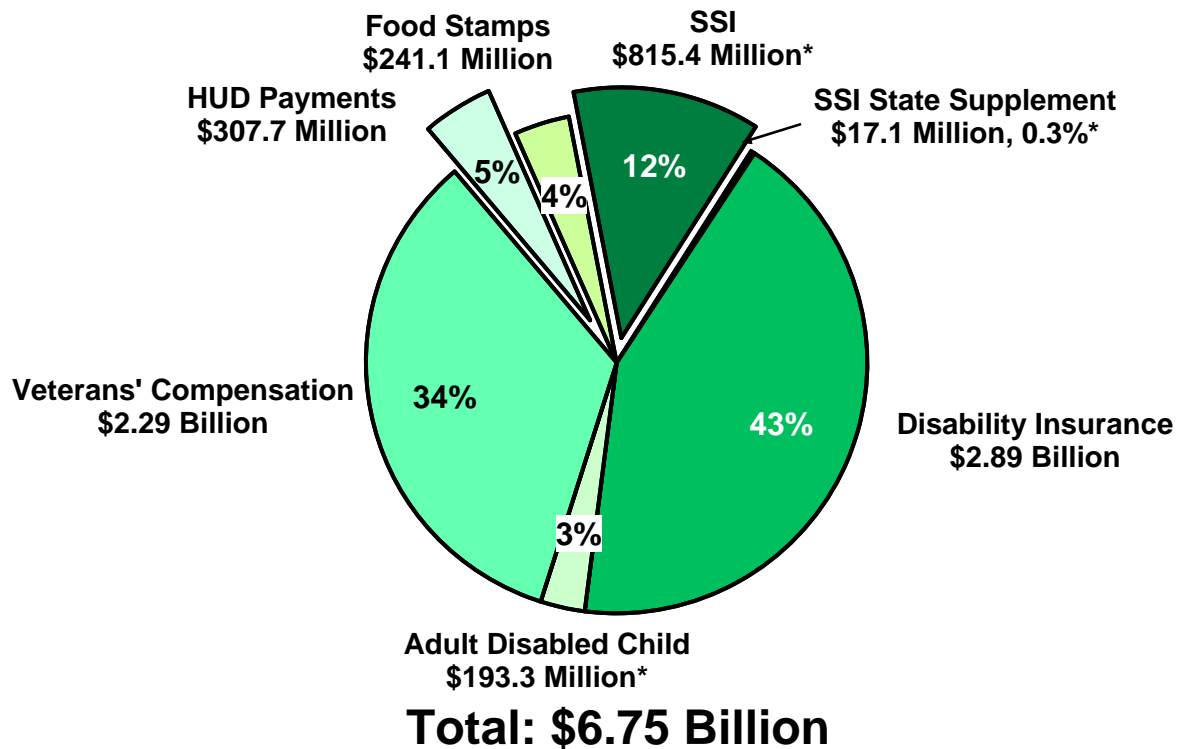
TOTAL PUBLIC SPENDING FOR DISABILITY: 1997-2013



PUBLIC SPENDING FOR DISABILITY BY CATEGORY: 2013

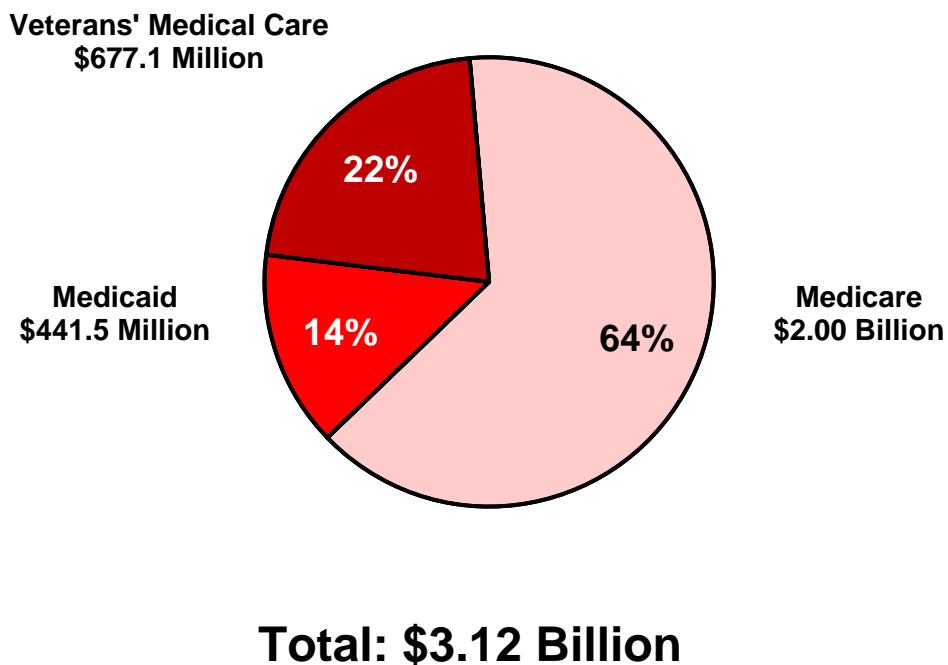


DISABILITY INCOME MAINTENANCE: 2013

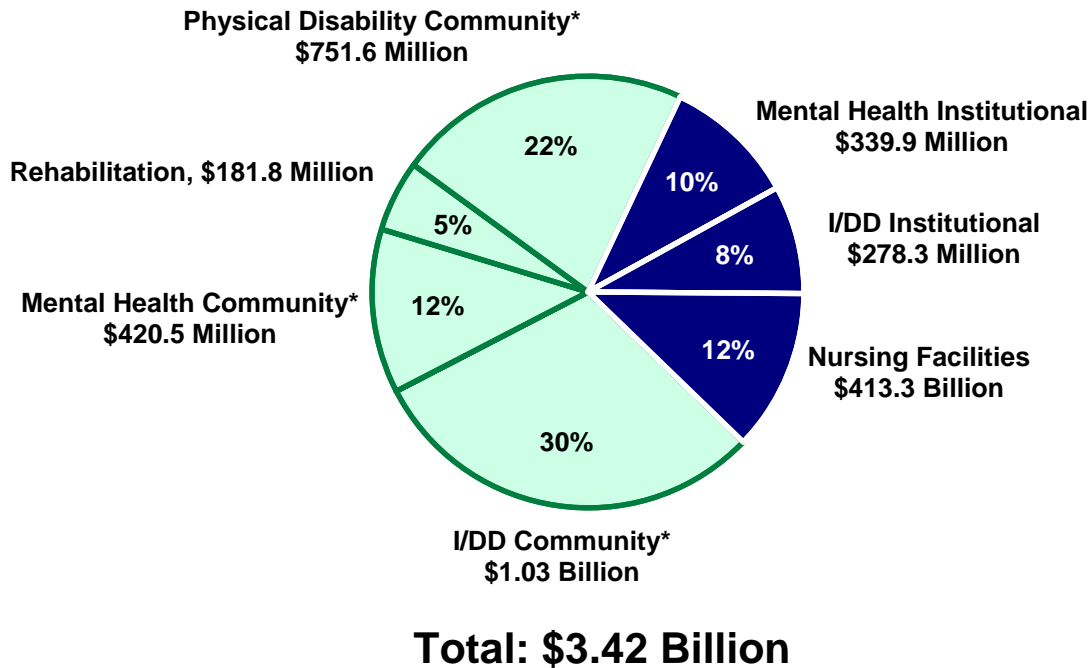


* Includes Income Maintenance for LTC Recipients - see page 2.

HEALTH CARE SPENDING FOR DISABILITY: 2013

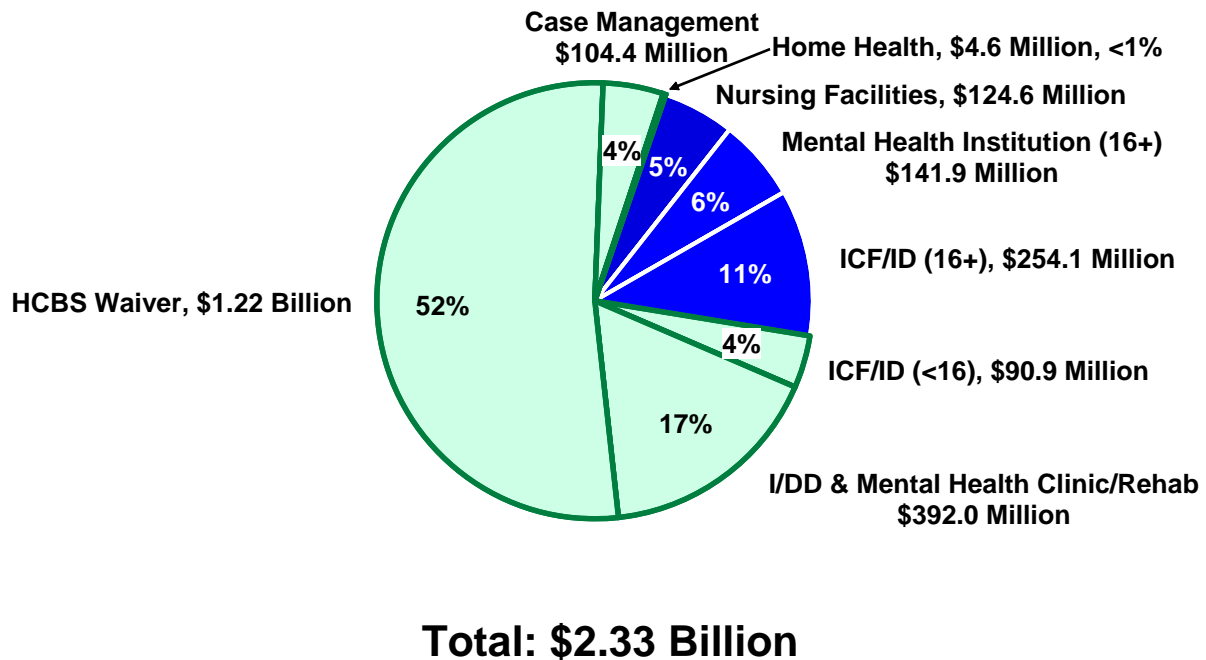


TOTAL LONG TERM CARE SPENDING FOR DISABILITY: 2013

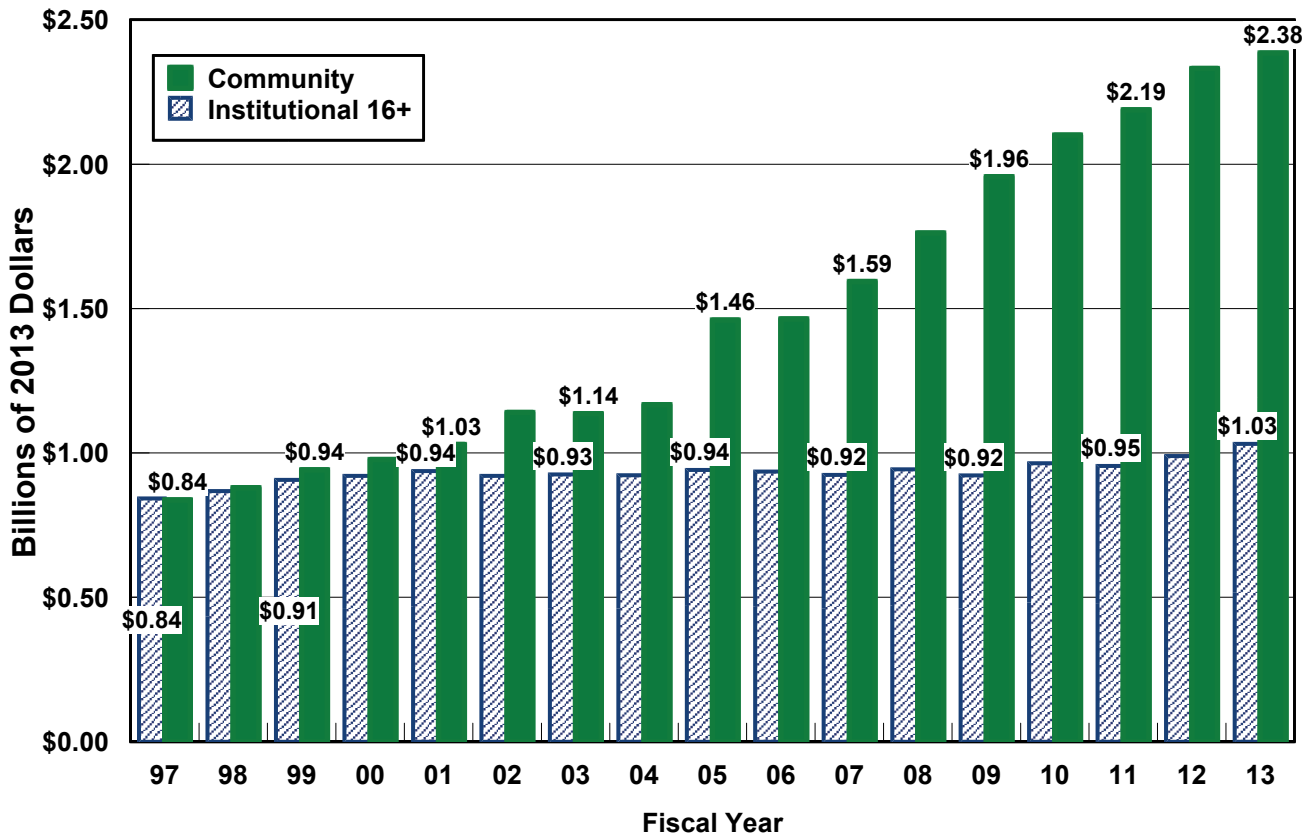


*Community services components for I/DD, Physical Disability, and Mental Health include \$161.5 million in federal-state income maintenance funding (SSI/ADC for HCBS Waiver Participants and SSI State supplement payments).

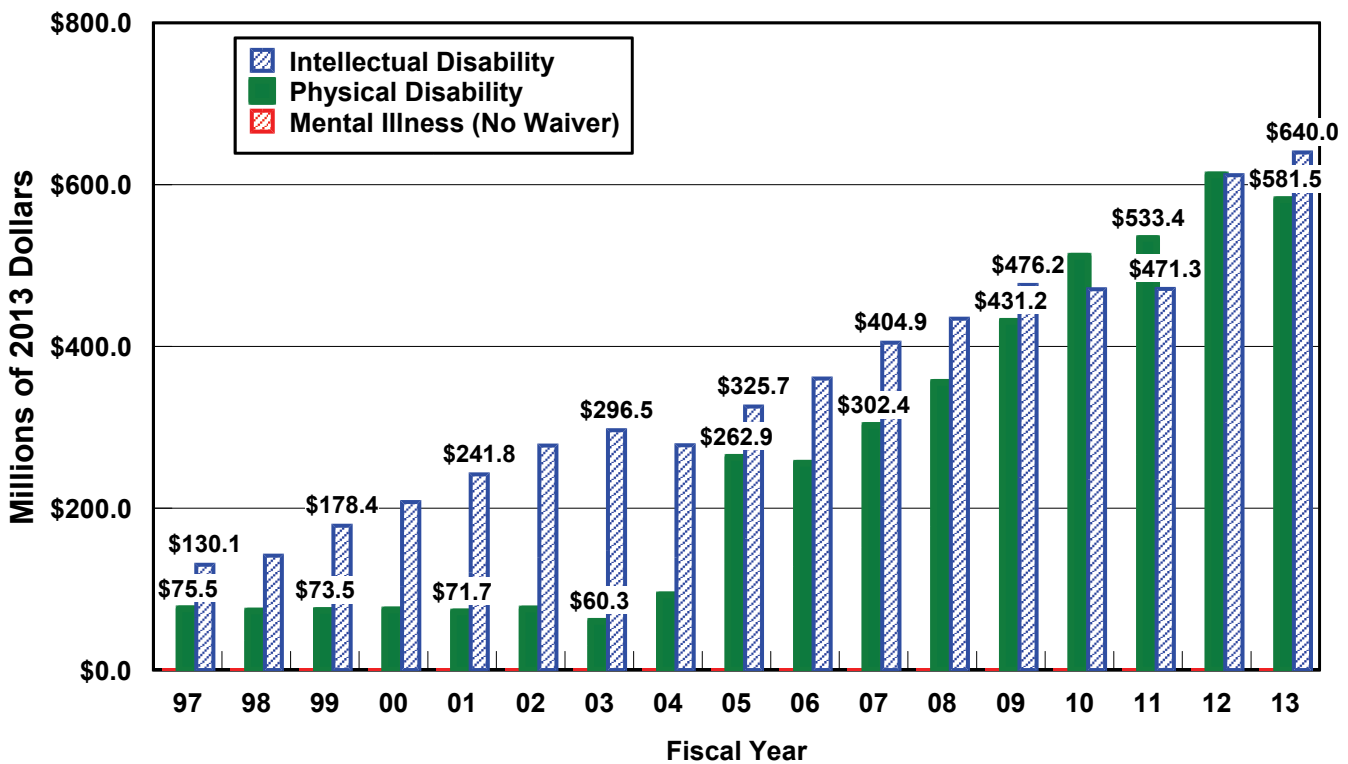
MEDICAID LONG TERM CARE SPENDING FOR DISABILITY: 2013



TOTAL LONG TERM CARE SPENDING FOR PERSONS WITH DISABILITIES: 1997-2013

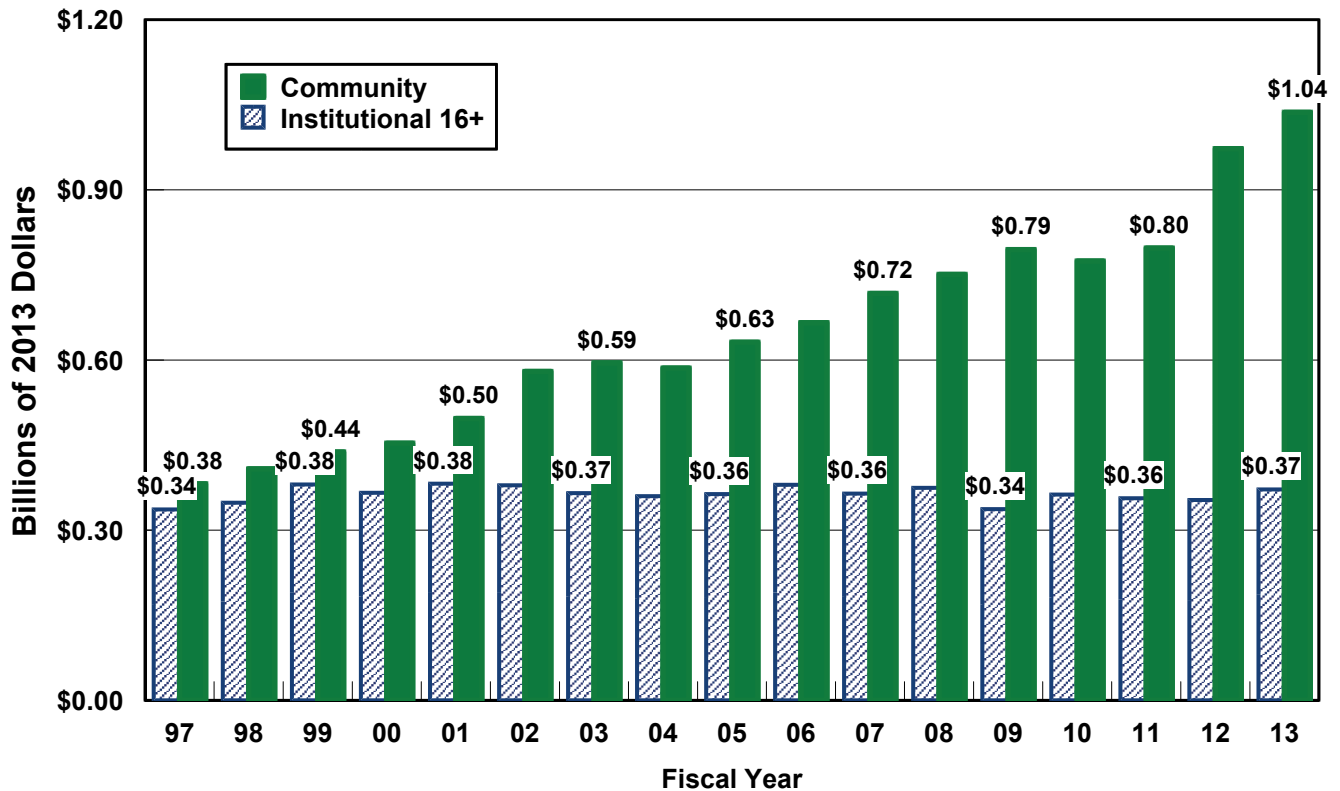


GROWTH OF THE HOME AND COMMUNITY BASED SERVICES WAIVER: 1997-2013

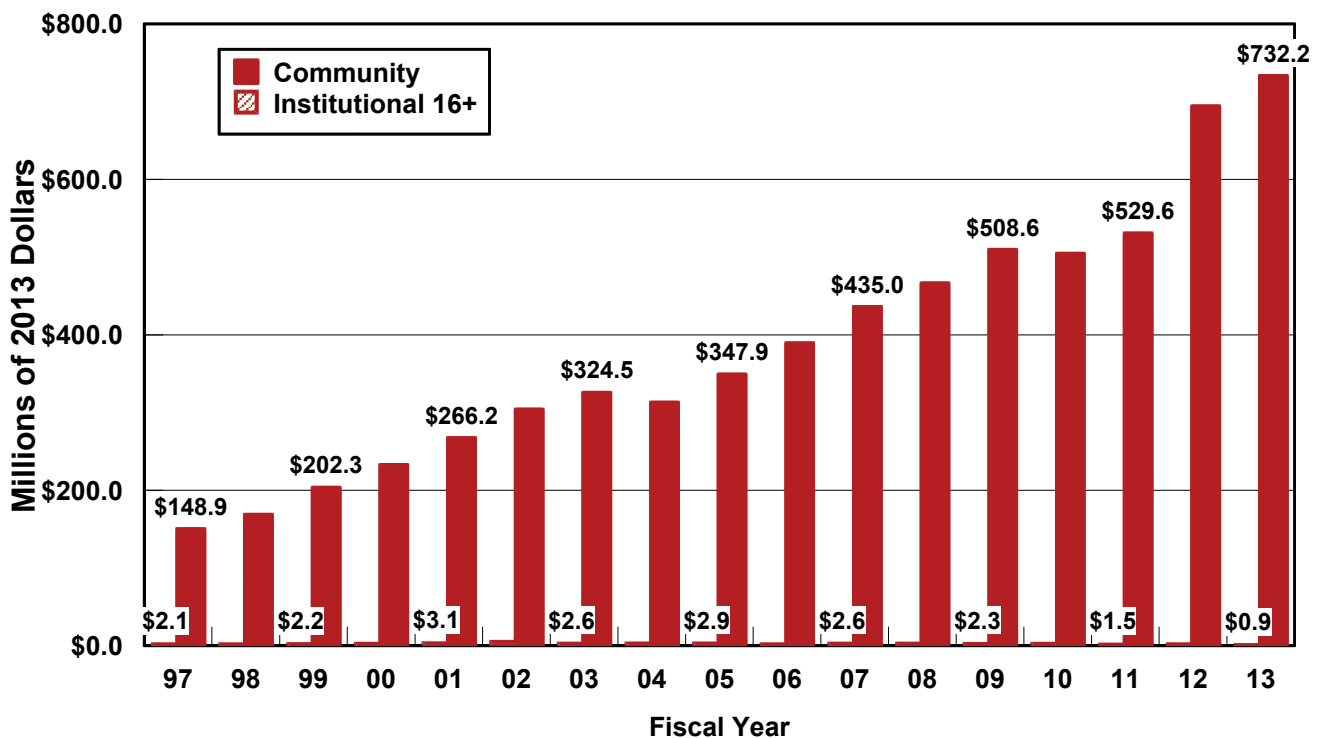


Source: Braddock (2015), University of Colorado School of Medicine, Department of Psychiatry.

TOTAL LONG TERM CARE SPENDING FOR INTELLECTUAL DISABILITY: 1997-2013

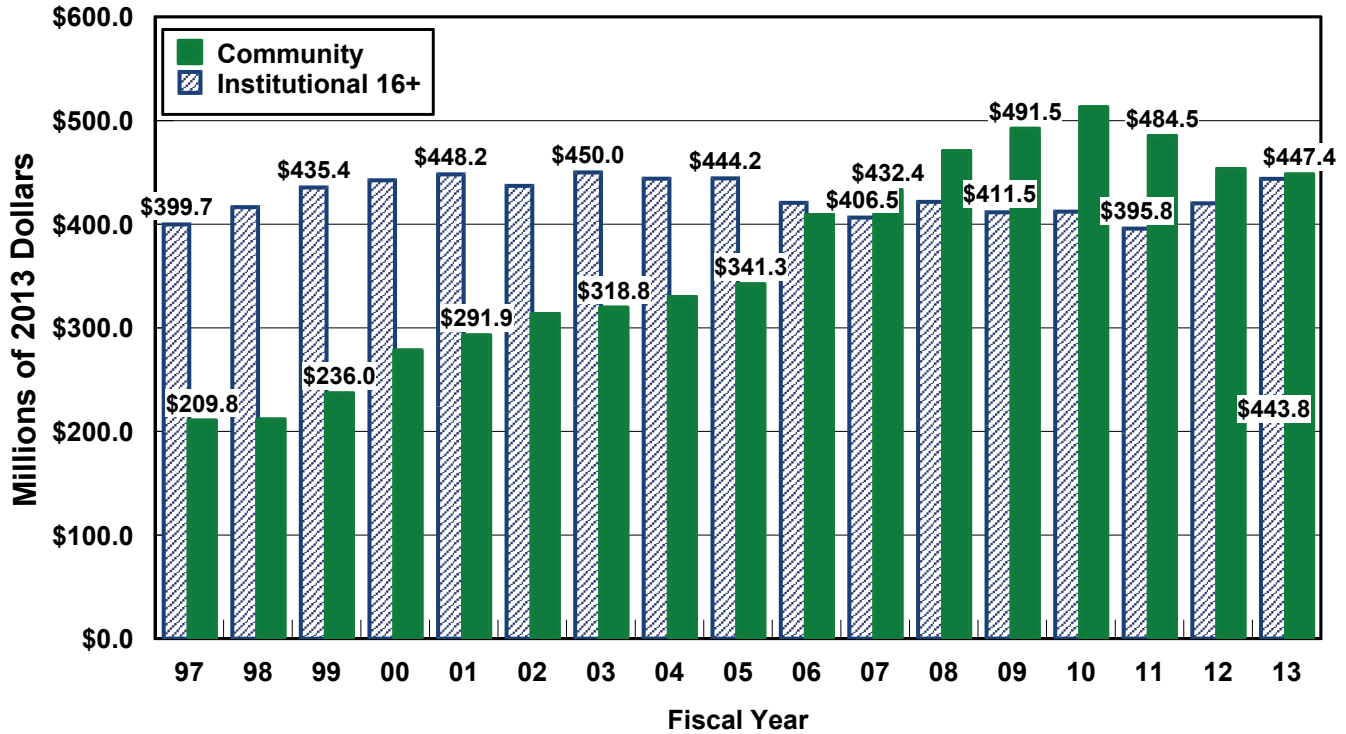


MEDICAID LONG TERM CARE SPENDING FOR INTELLECTUAL DISABILITY: 1997-2013

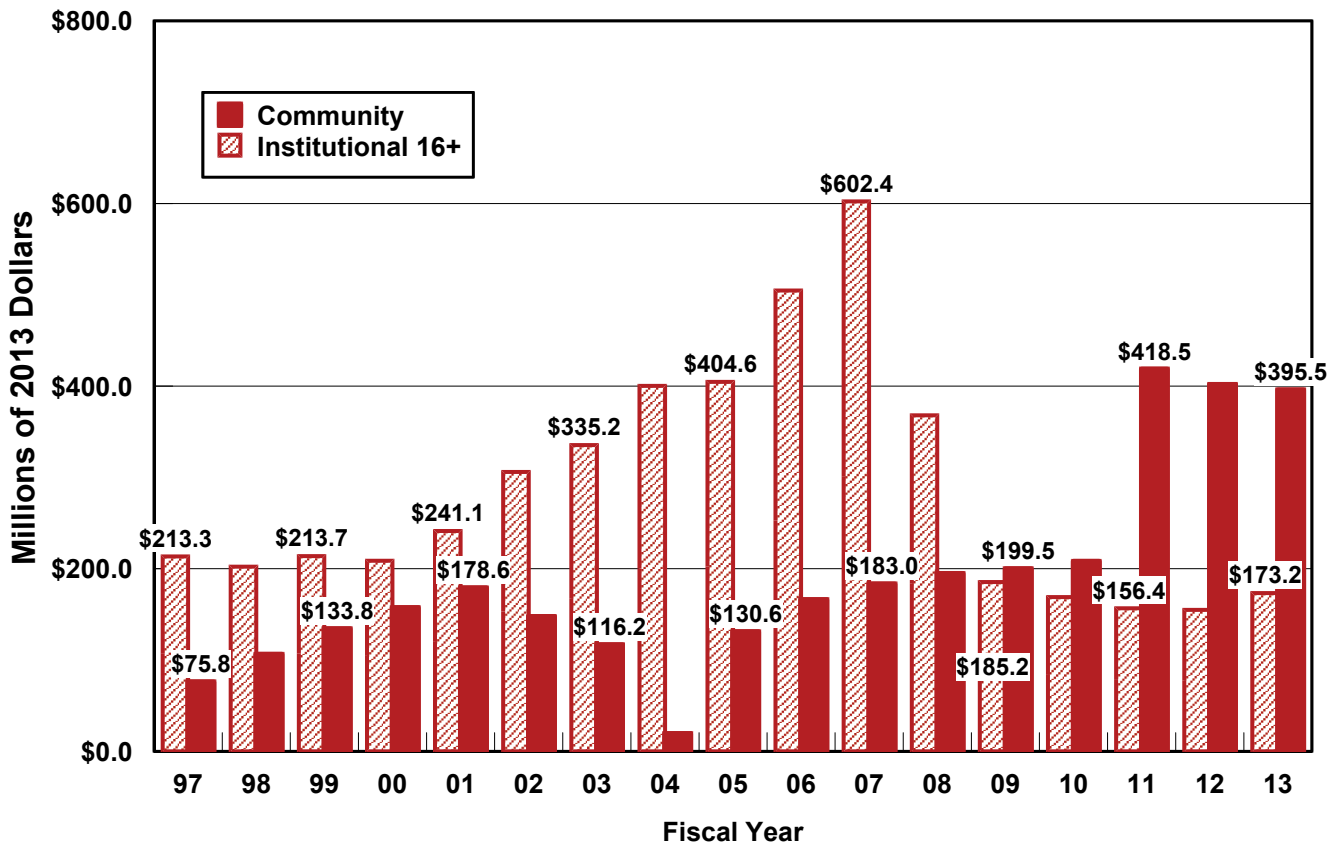


Source: Braddock (2015), University of Colorado School of Medicine, Department of Psychiatry.

TOTAL LONG TERM CARE SPENDING FOR MENTAL HEALTH: 1997-2013

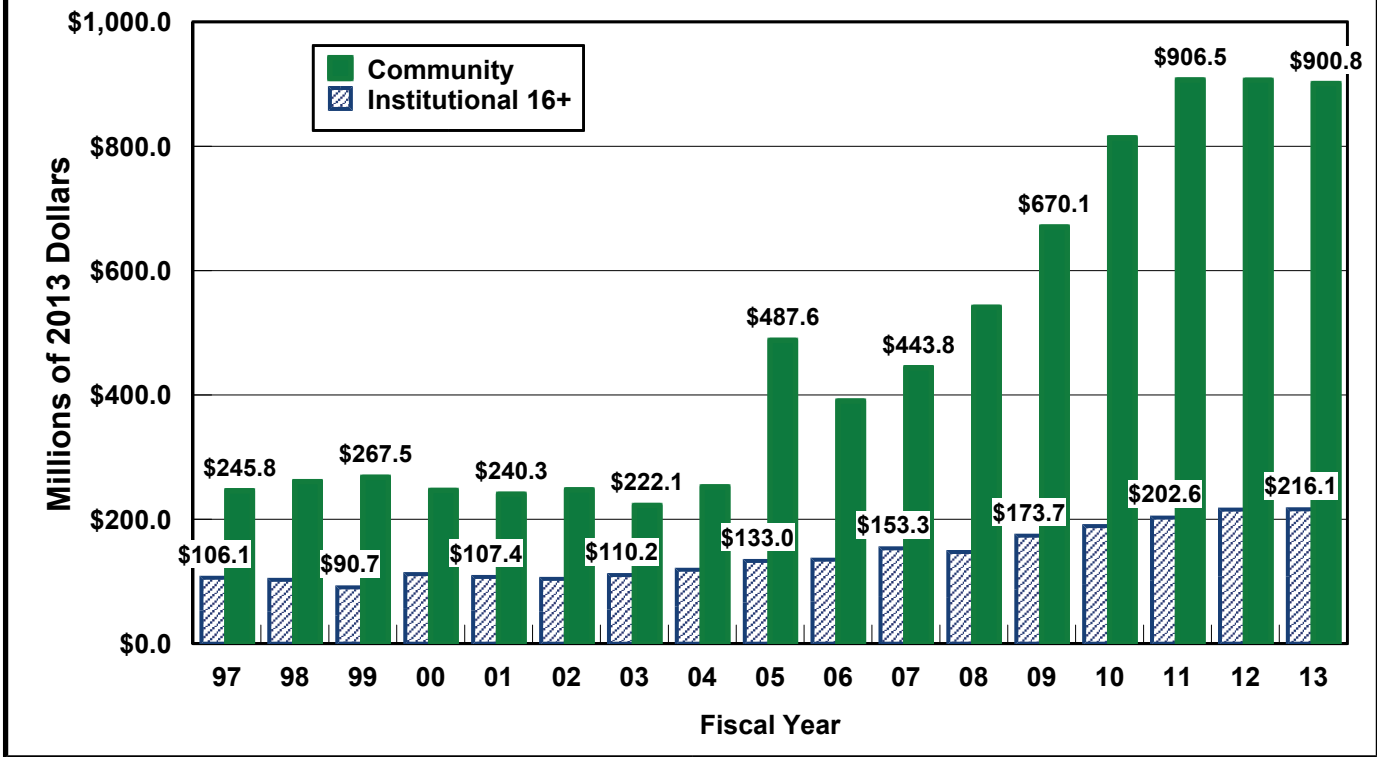


MEDICAID LONG TERM CARE SPENDING FOR MENTAL HEALTH : 1997-2013

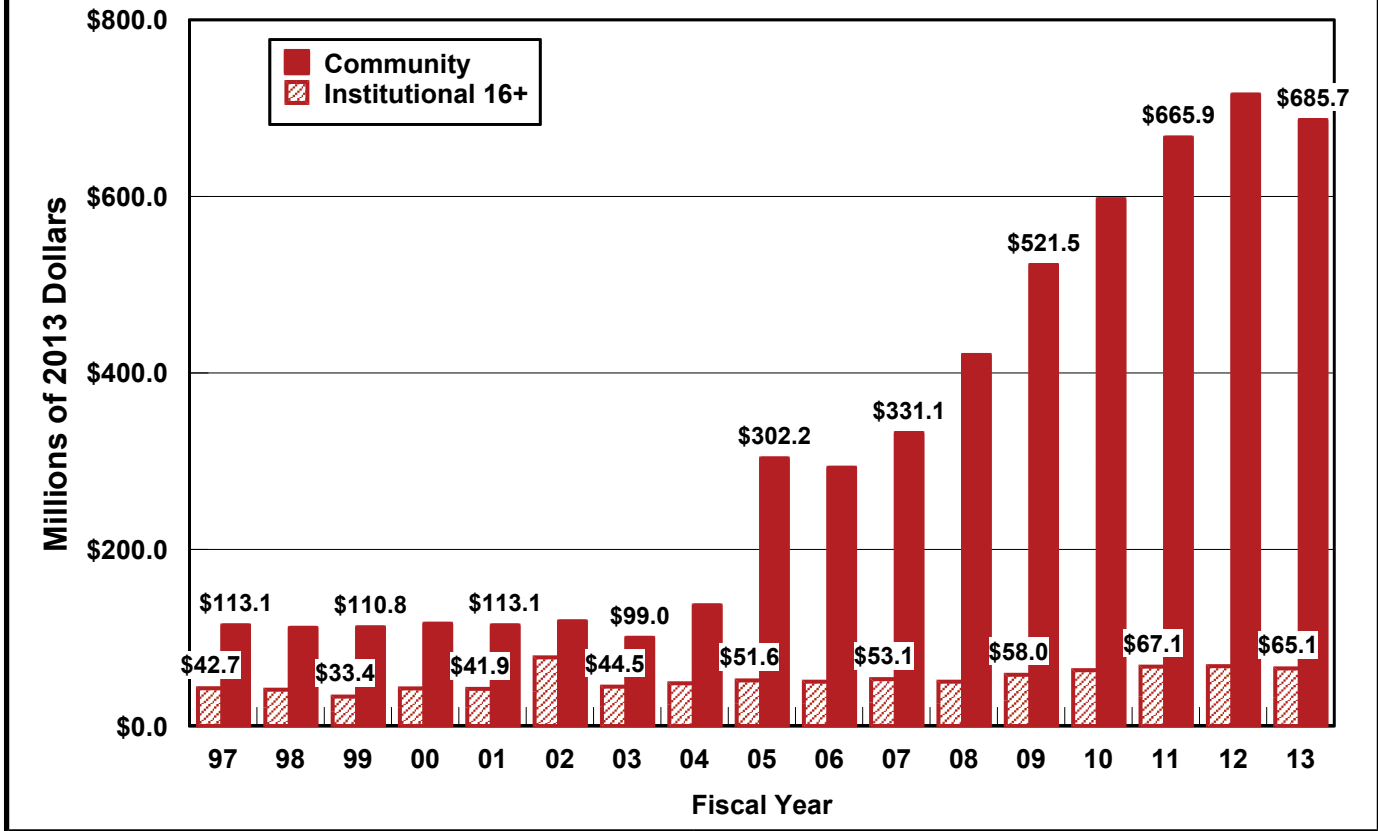


Source: Braddock (2015), University of Colorado School of Medicine, Department of Psychiatry.

TOTAL LONG TERM CARE SPENDING FOR PHYSICAL DISABILITIES: 1997-2013

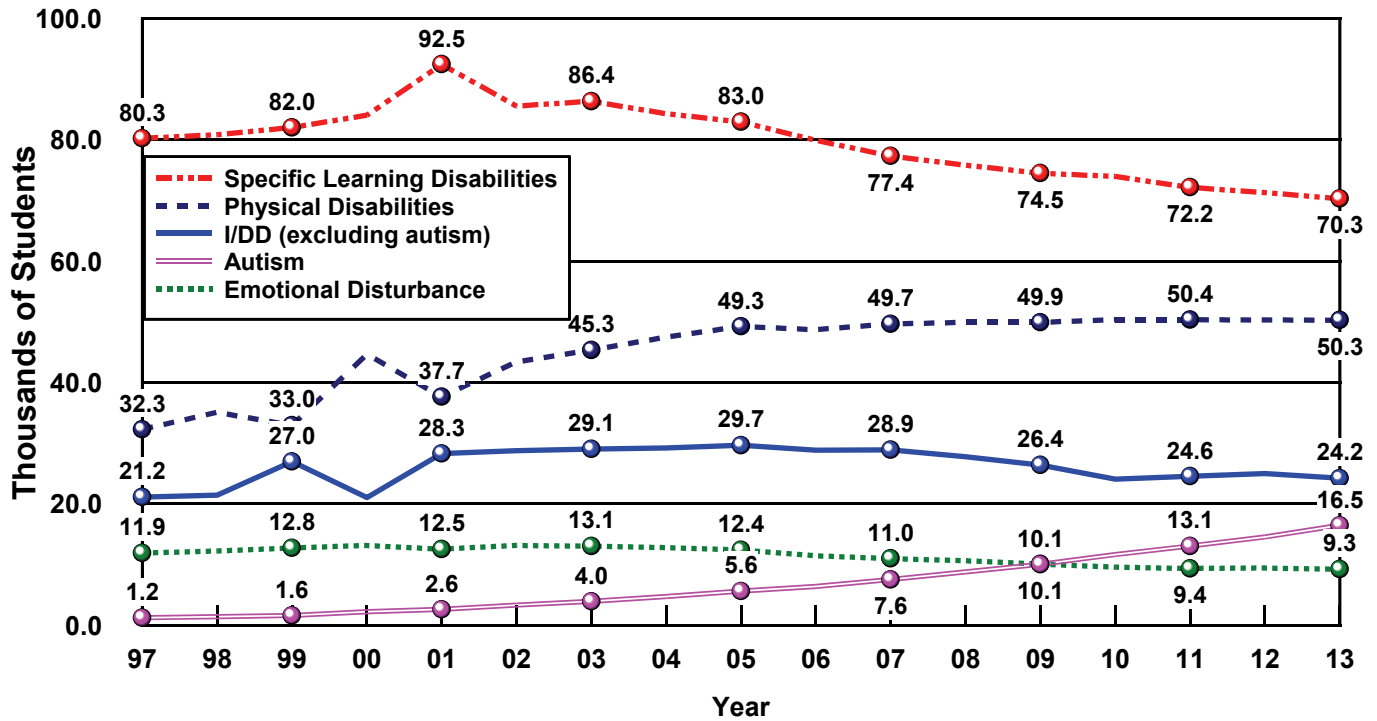


MEDICAID LONG TERM CARE SPENDING FOR PHYSICAL DISABILITY: 1997-2013

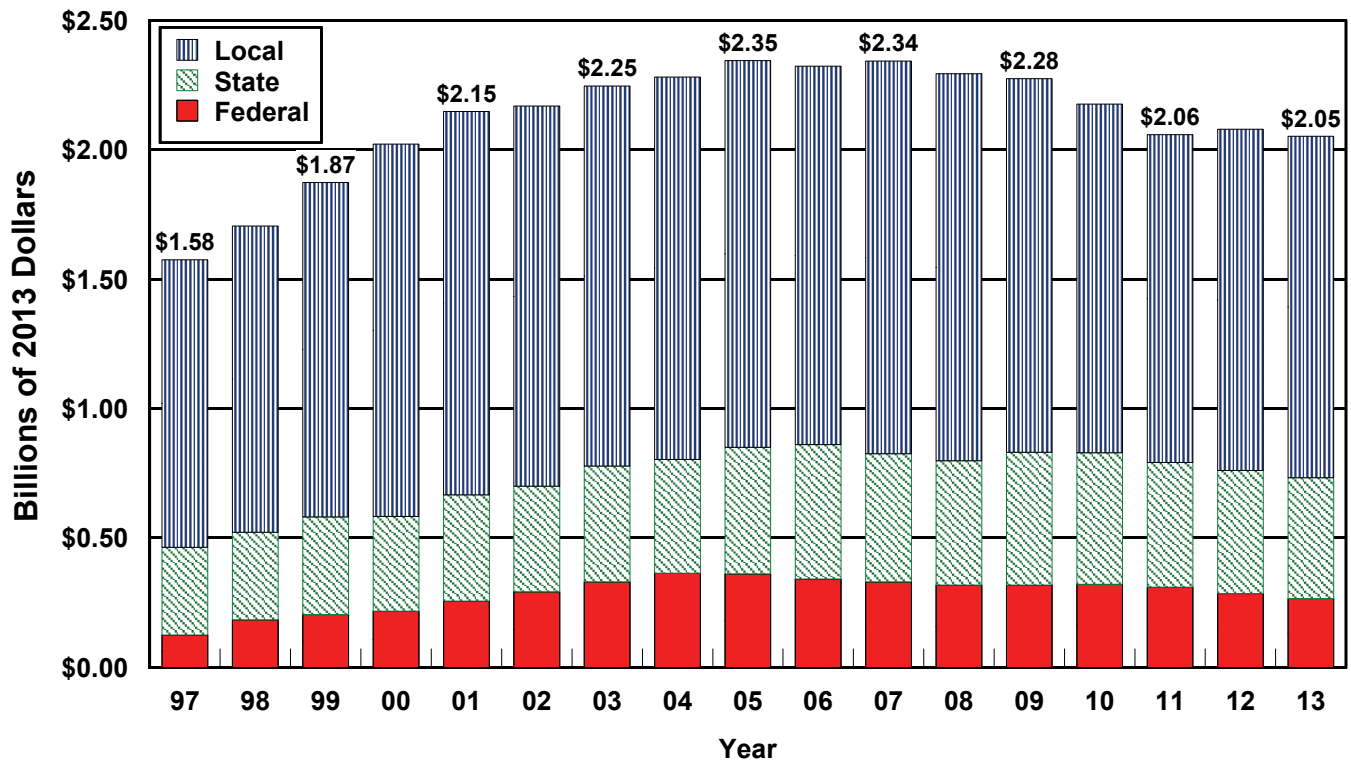


Source: Braddock (2015), University of Colorado School of Medicine, Department of Psychiatry.

SPECIAL EDUCATION STUDENTS IN VIRGINIA: 1997-2013



PUBLIC SPENDING FOR SPECIAL EDUCATION: 1997-2013



Source: Braddock (2015), University of Colorado School of Medicine, Department of Psychiatry.