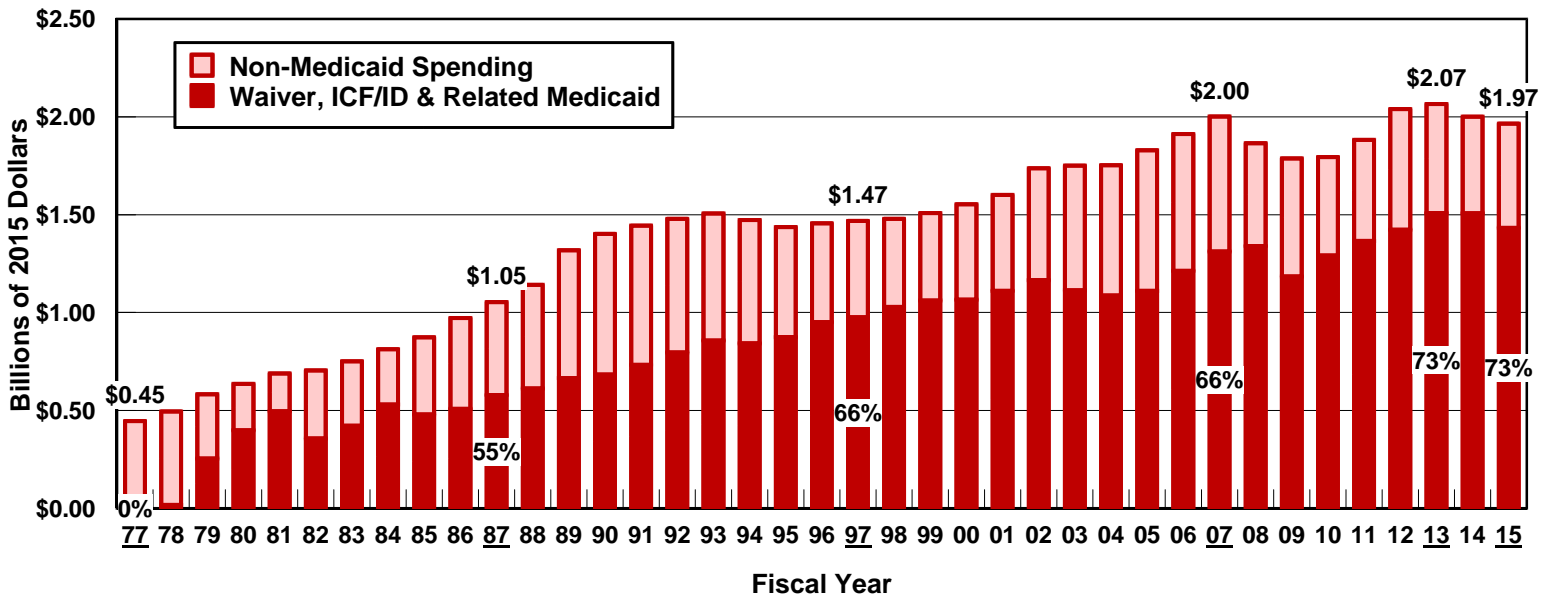
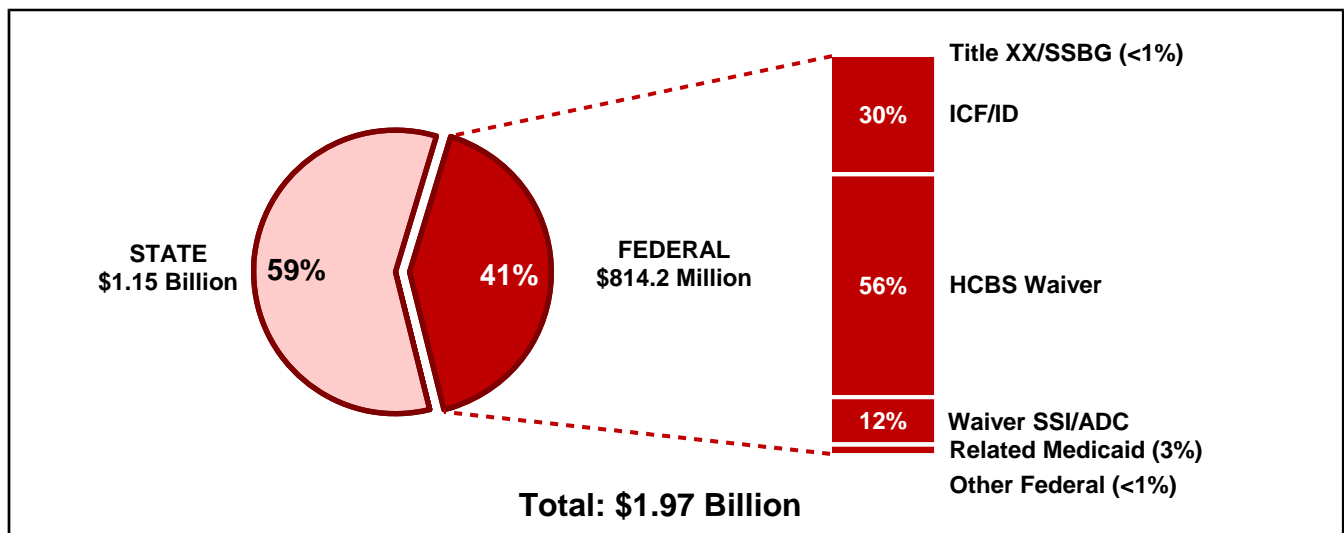


NEW JERSEY

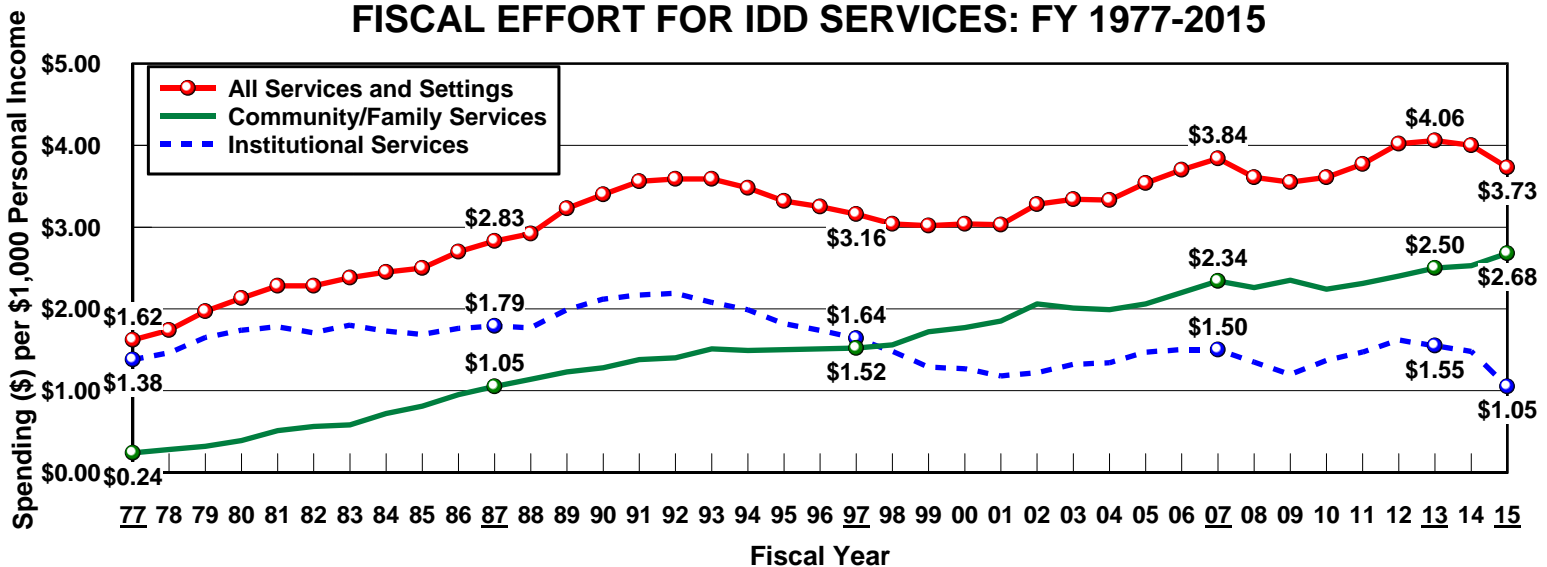
TOTAL PUBLIC IDD SPENDING FOR SERVICES: FY 1977-2015



PUBLIC IDD SPENDING BY REVENUE SOURCE: FY 2015



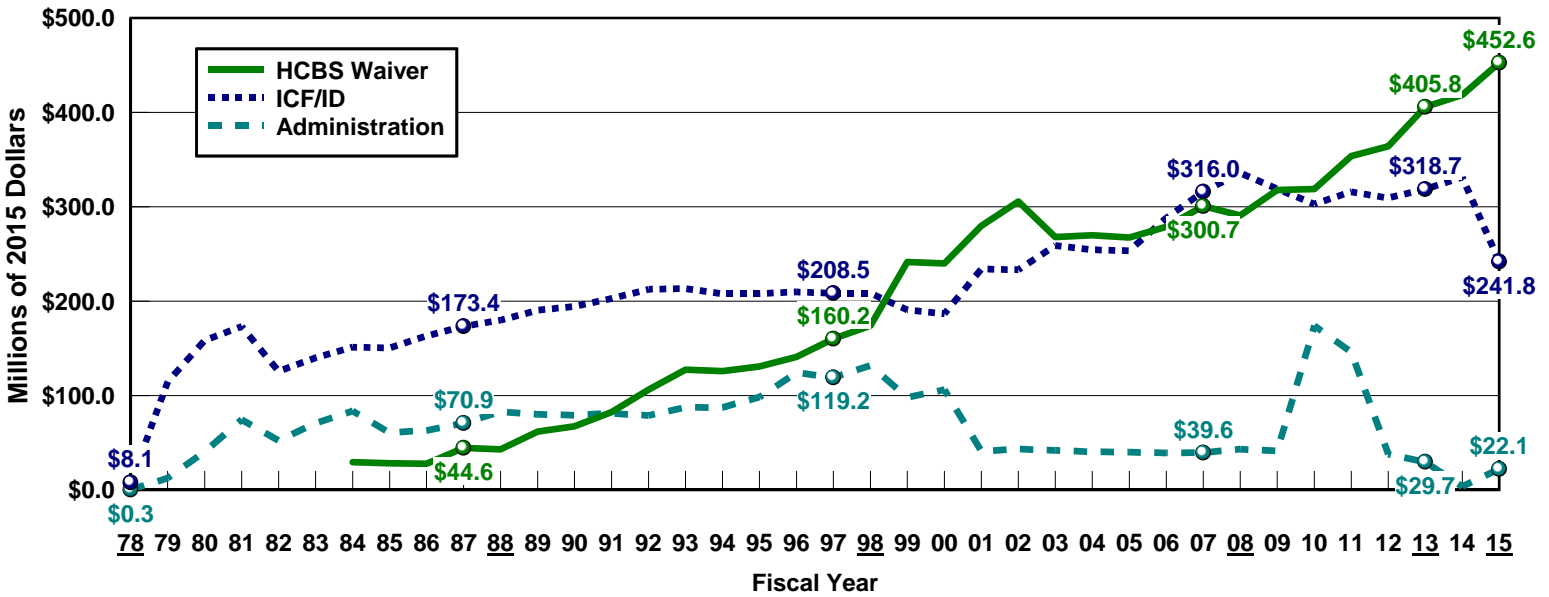
FISCAL EFFORT FOR IDD SERVICES: FY 1977-2015



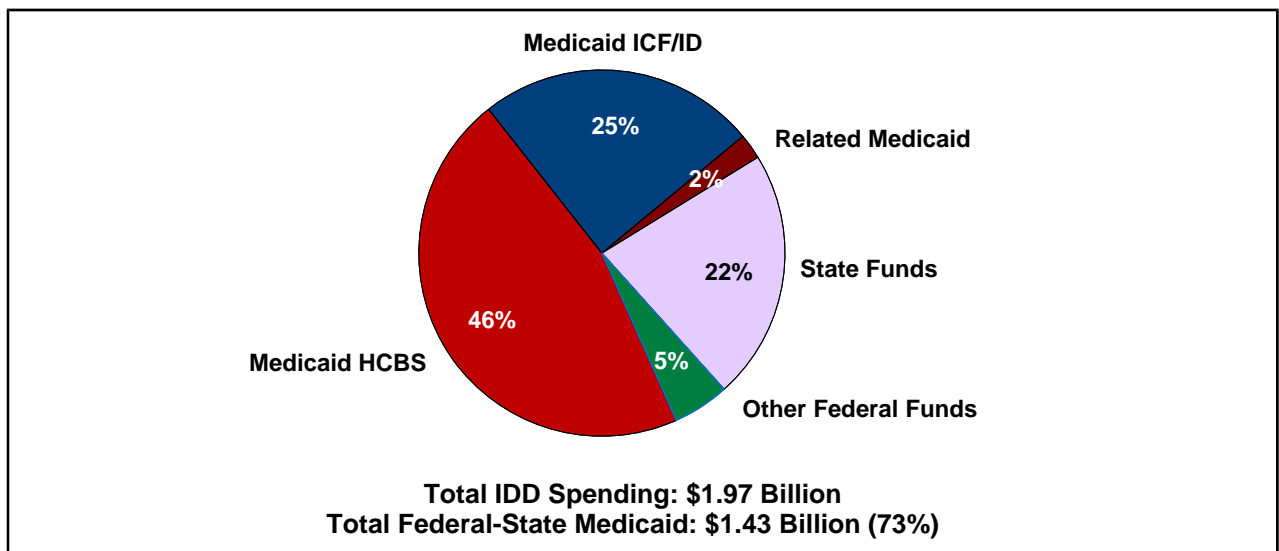
Source: Braddock et al., Coleman Institute and Department of Psychiatry, University of Colorado, 2017.

NEW JERSEY

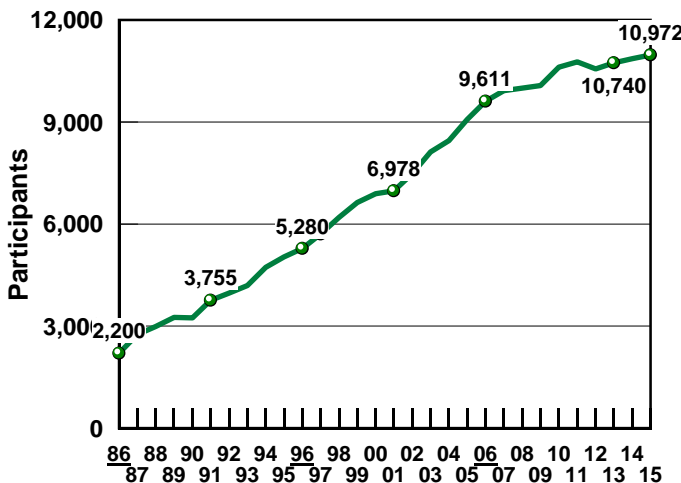
FEDERAL IDD MEDICAID SPENDING BY REVENUE SOURCE



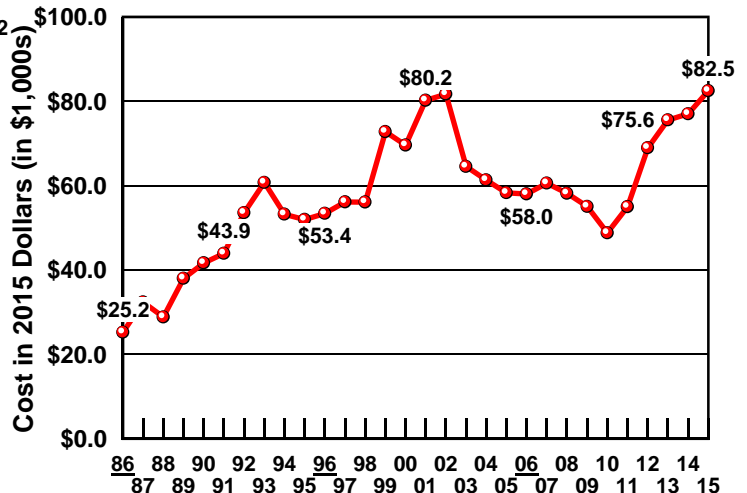
FEDERAL-STATE MEDICAID AS A PERCENTAGE OF TOTAL IDD SPENDING IN FY 2015



HCBS WAIVER PARTICIPANTS

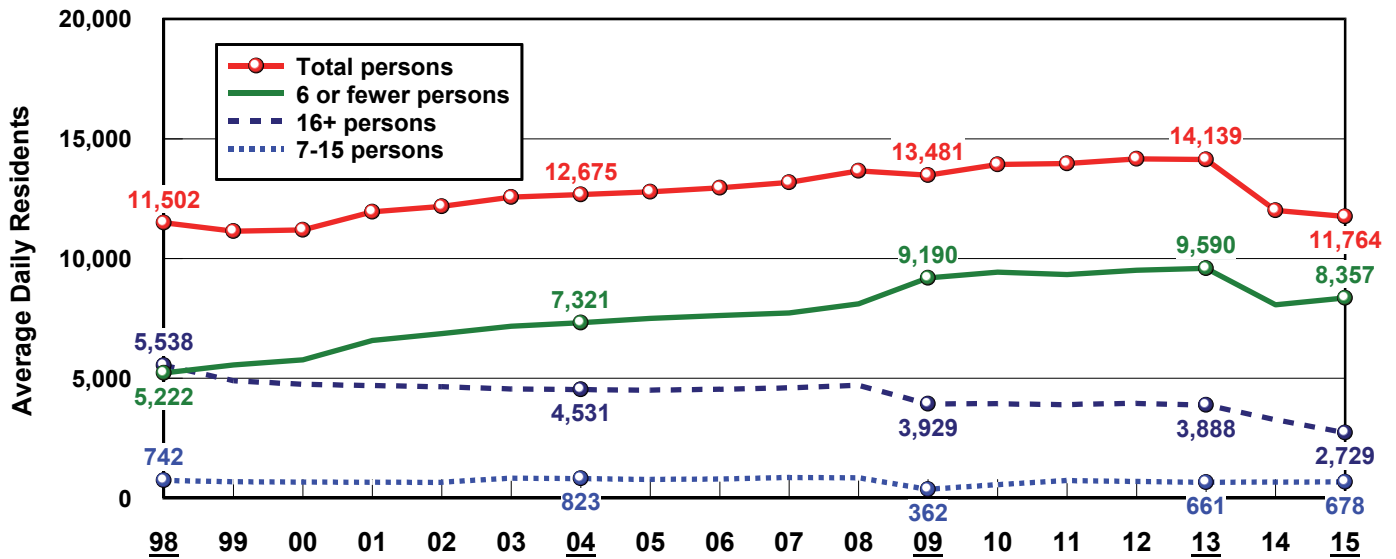


ADJUSTED WAIVER COST PER PARTICIPANT



Source: Braddock et al., Coleman Institute and Department of Psychiatry, University of Colorado, 2017.

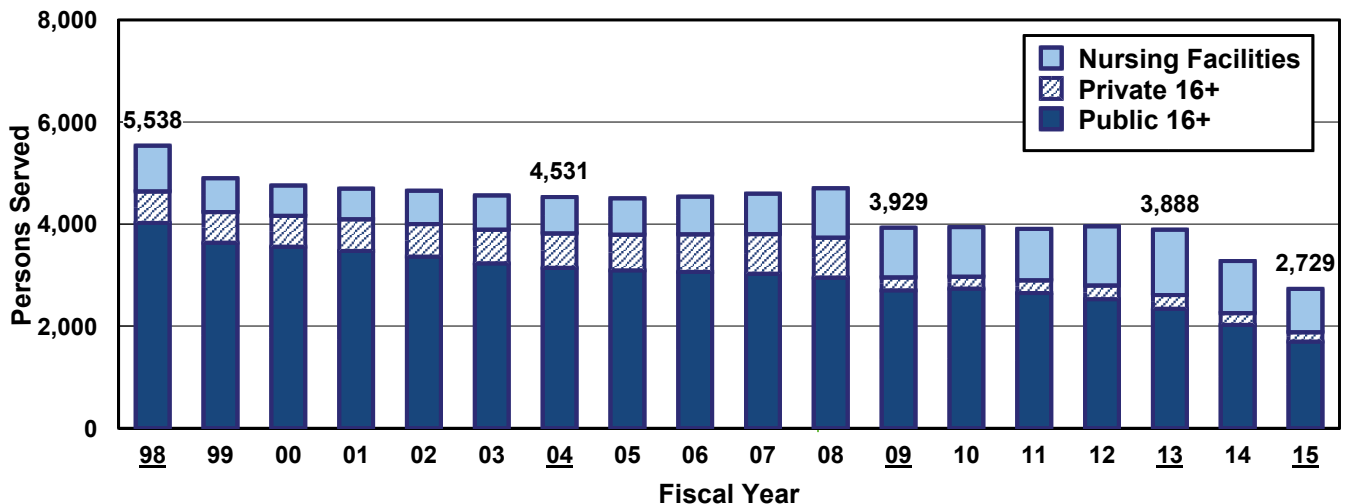
PERSONS WITH IDD BY SIZE OF SETTING: FY 1998-2015



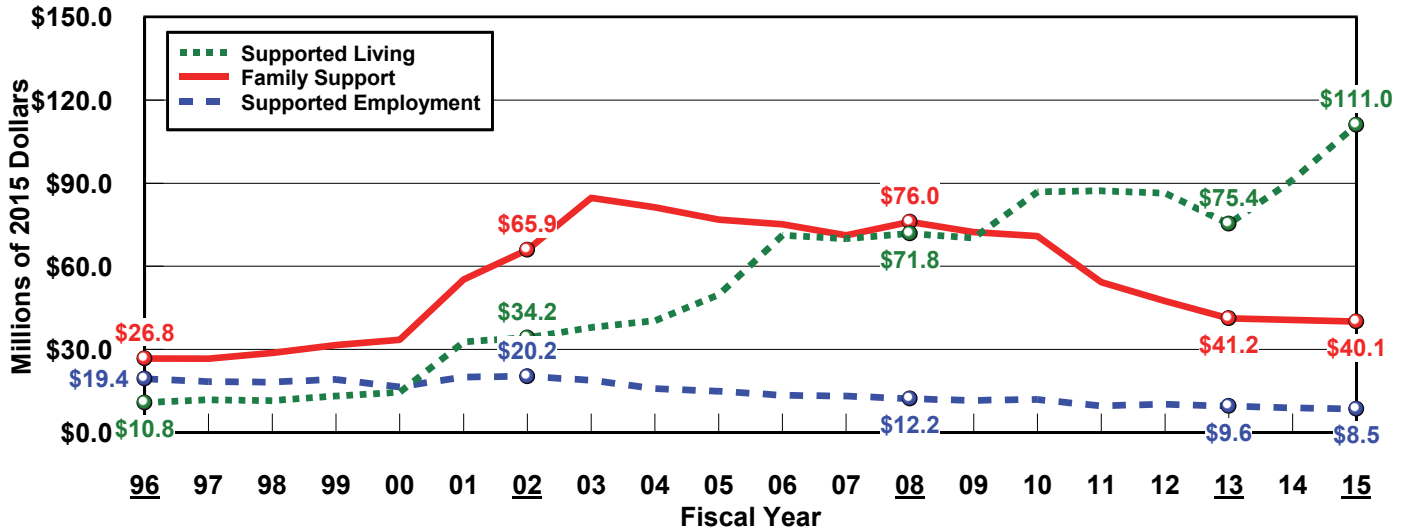
PERSONS SERVED BY SETTING: FY 2000-2015

	2000	2001	2002	2003	2004	2005	2006	2007	2008	2009	2010	2011	2012	2013	2014	2015
TOTAL	11,199	11,950	12,181	12,569	12,675	12,787	12,951	13,182	13,663	13,481	13,927	13,971	14,157	14,139	12,012	11,764
16+ PERSONS	4,757	4,697	4,654	4,562	4,531	4,505	4,539	4,597	4,705	3,929	3,939	3,904	3,955	3,888	3,276	2,729
Nursing Facilities	593	601	652	672	714	714	741	793	972	976	973	1,008	1,161	1,278	1,021	849
State Institutions	3,556	3,473	3,364	3,232	3,145	3,096	3,064	3,026	2,953	2,703	2,738	2,649	2,527	2,341	2,023	1,701
Private ICF/ID	73	74	74	74	74	74	74	73	53	53	38	44	52	59	59	53
Other Residential	535	549	564	584	598	621	660	705	727	197	190	203	215	210	173	127
7-15 PERSONS	674	670	661	837	823	782	791	860	855	362	557	737	697	661	667	678
Public ICF/ID	0	0	0	0	0	0	0	0	0	0	0	0	0	0	0	0
Private ICF/ID	0	0	0	0	0	0	0	0	0	0	0	0	0	0	0	0
Other Residential	674	670	661	837	823	782	791	860	855	362	557	737	697	661	667	678
≤6 PERSONS	5,768	6,583	6,866	7,170	7,321	7,500	7,621	7,725	8,103	9,190	9,431	9,330	9,505	9,590	8,069	8,357
Public ICF/ID	0	0	0	0	0	0	0	0	0	0	0	0	0	0	0	0
Private ICF/ID	0	0	0	0	0	0	0	0	0	0	0	0	0	0	0	0
Supported Living	791	1,359	1,430	1,470	1,483	1,727	1,865	1,936	2,141	2,279	2,365	2,188	2,173	2,153	2,158	2,214
Other Residential	4,977	5,224	5,436	5,700	5,838	5,773	5,756	5,789	5,962	6,911	7,066	7,142	7,332	7,437	5,912	6,143

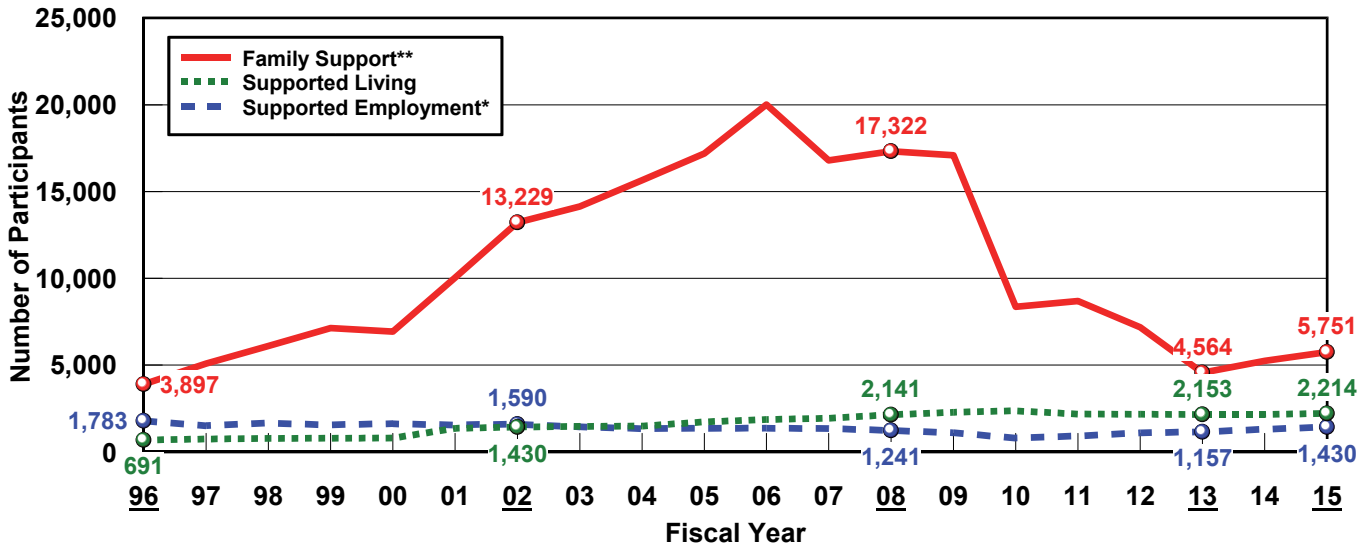
PERSONS IN PUBLIC AND PRIVATE 16+ INSTITUTIONS: FY 1998-2015



INDIVIDUAL AND FAMILY SUPPORT SPENDING: FY 1996-2015

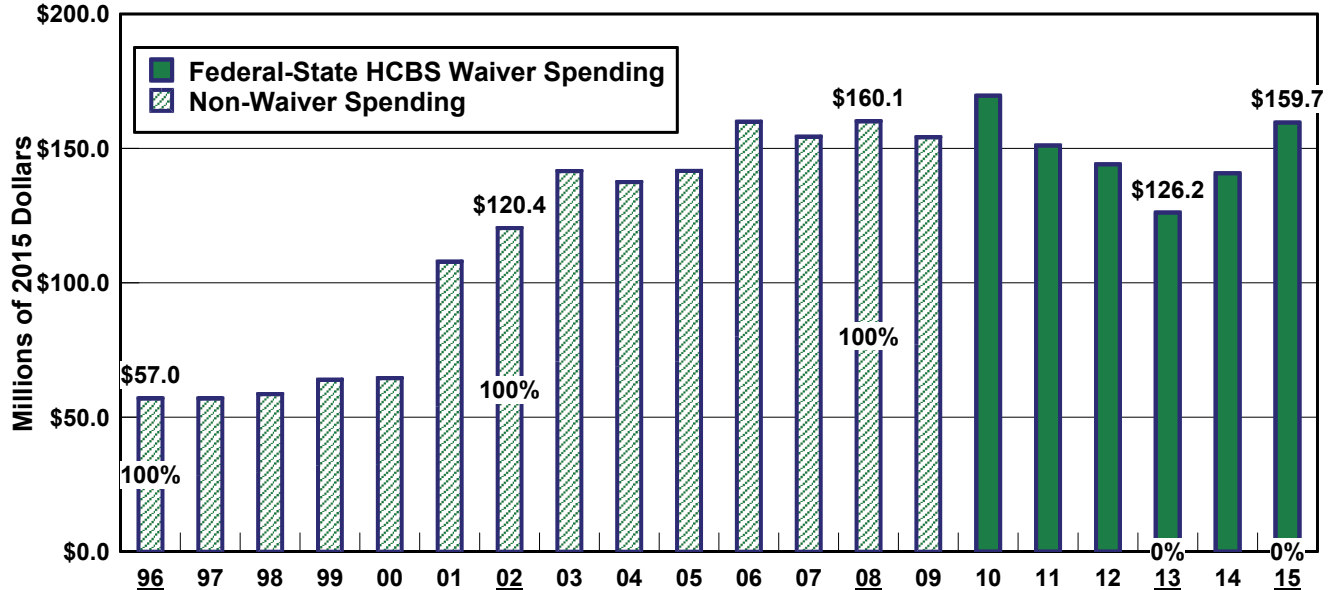


PARTICIPANTS: FY 1996-2015



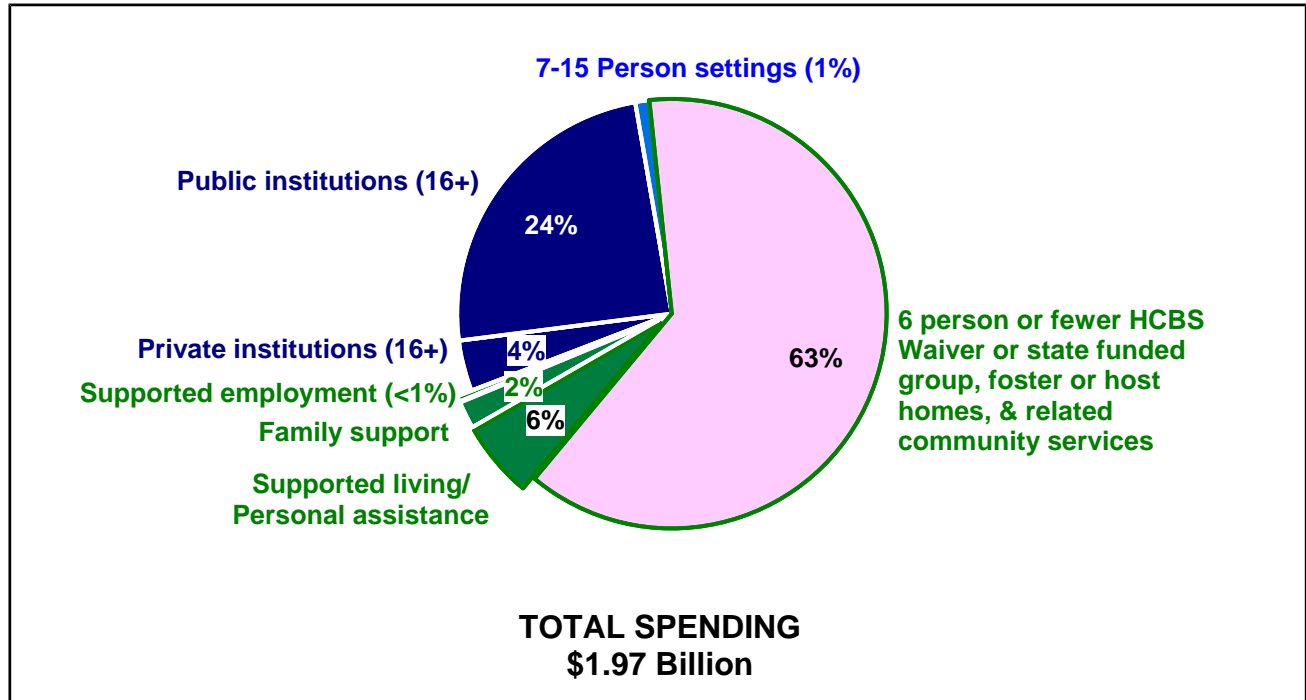
*Does not include 1,127 follow-along work support workers in 2014 and 1,158 workers in 2015.
**Family support cash subsidies terminated in 2009.

SUPPORTED LIVING, FAMILY SUPPORT AND SUPPORTED EMPLOYMENT SPENDING: FY 1996-2015

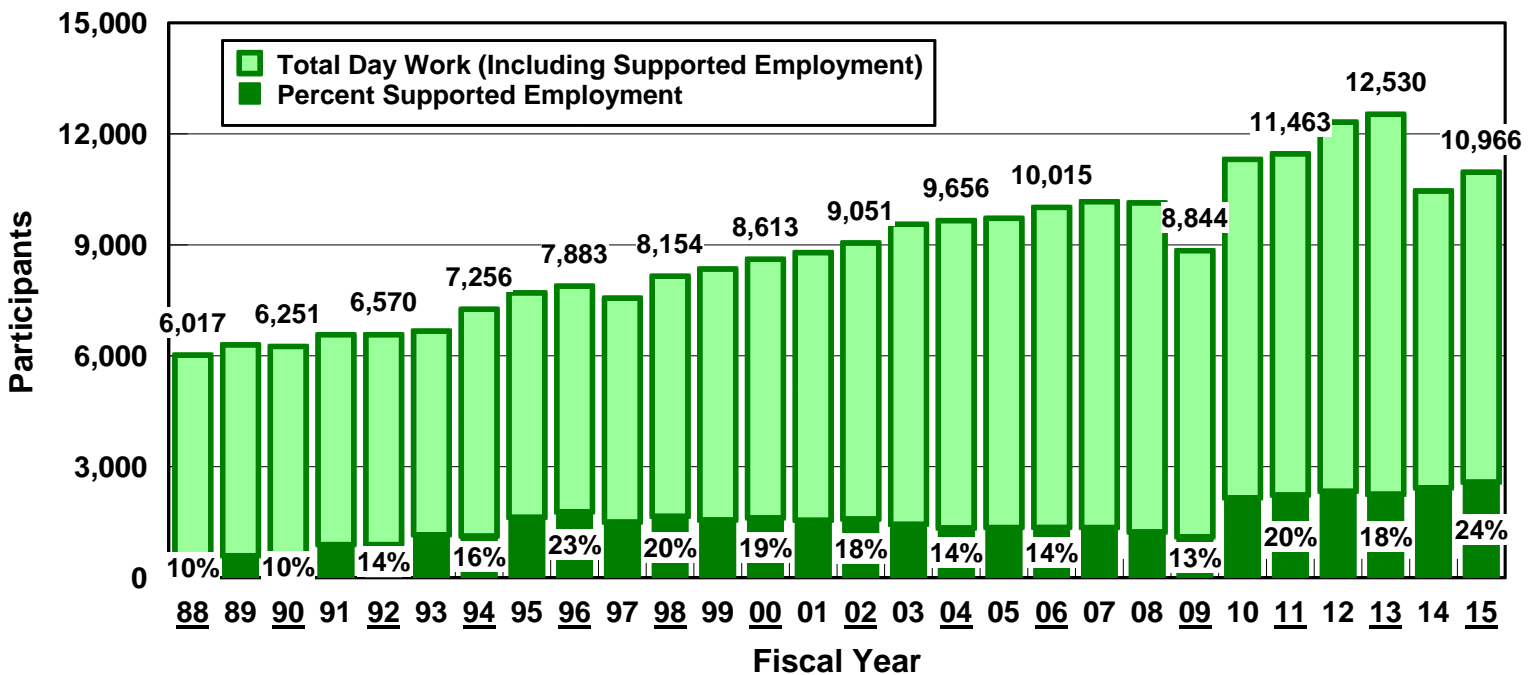


Source: Braddock et al., Coleman Institute and Department of Psychiatry, University of Colorado, 2017.

SUPPORTED LIVING, FAMILY SUPPORT, AND SUPPORTED EMPLOYMENT AS A PERCENTAGE OF TOTAL SPENDING: FY 2015



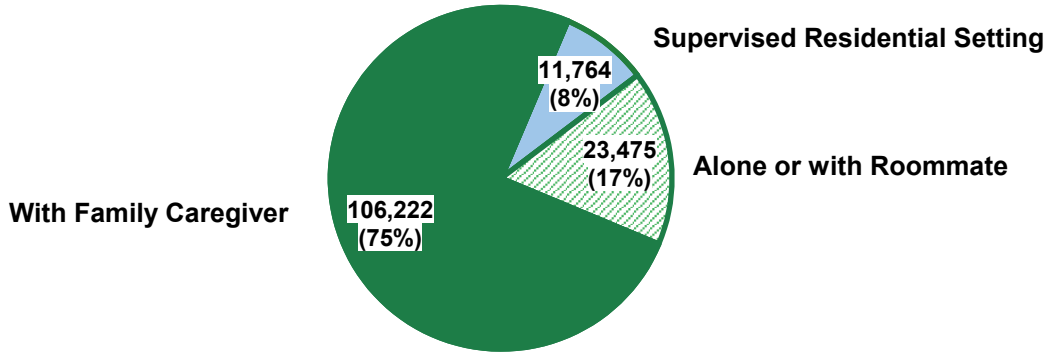
TOTAL DAY/WORK AND SUPPORTED EMPLOYMENT PARTICIPANTS : FY 1988-2015



Source: Braddock et al., Coleman Institute and Department of Psychiatry, University of Colorado, 2017.

<http://stateofthestates.org>

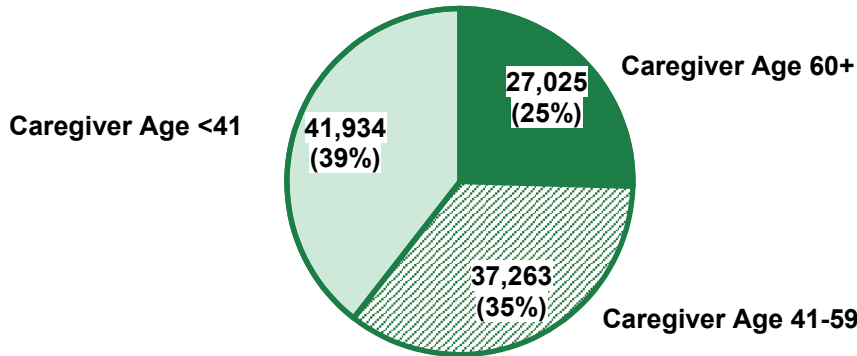
ESTIMATED NUMBER OF INDIVIDUALS WITH IDD BY LIVING ARRANGEMENT: FY 2015



TOTAL: 141,461 PERSONS

Braddock et al. 2016, based on Fujiura 2008, 2012

ESTIMATED NUMBER OF INDIVIDUALS WITH IDD BY AGE GROUP LIVING WITH FAMILY CAREGIVERS: FY 2015



TOTAL: 106,222 PERSONS

Braddock et al. 2016, based on Fujiura 2008, 2012

ESTIMATED NUMBER OF IDD CAREGIVING FAMILIES AND FAMILIES SUPPORTED BY IDD AGENCIES: FY 1988-2015

