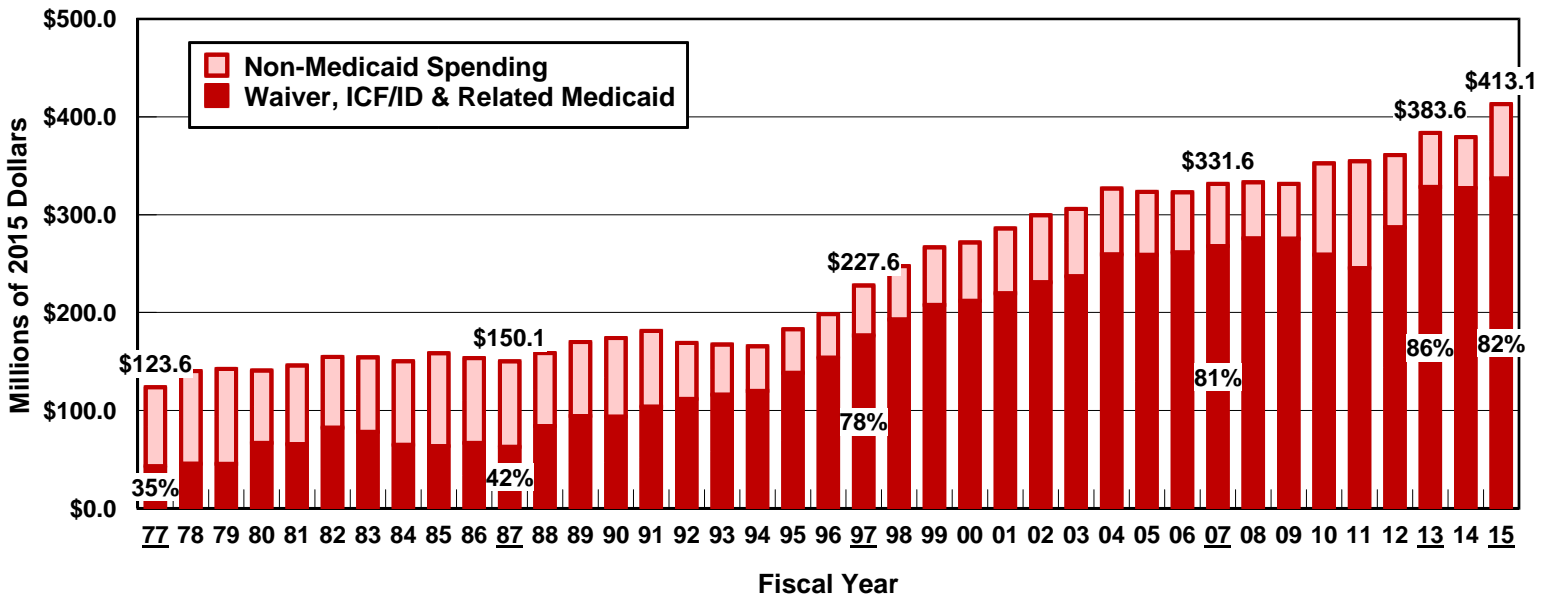
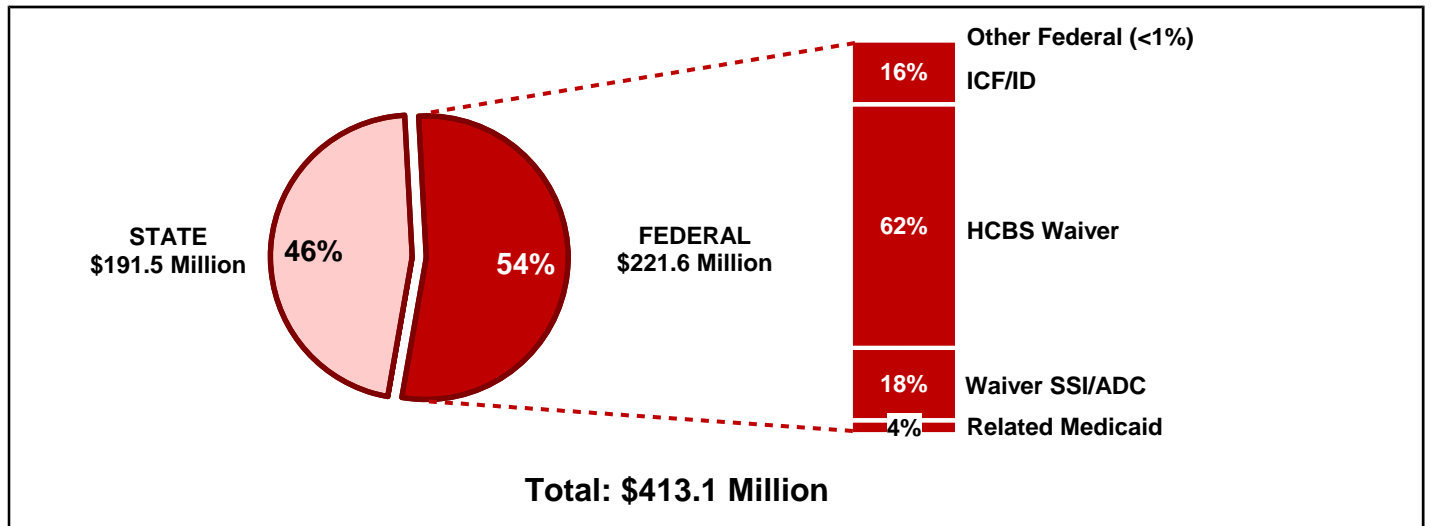


NEBRASKA

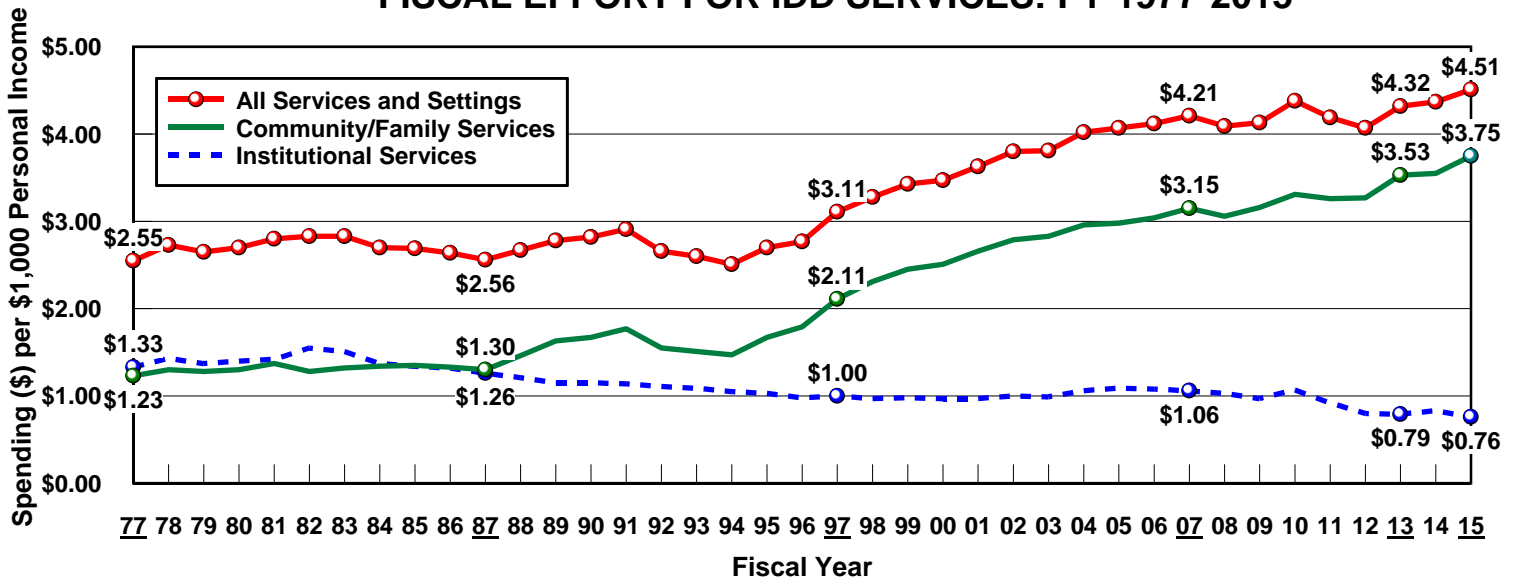
TOTAL PUBLIC IDD SPENDING FOR SERVICES: FY 1977-2015



PUBLIC IDD SPENDING BY REVENUE SOURCE: FY 2015



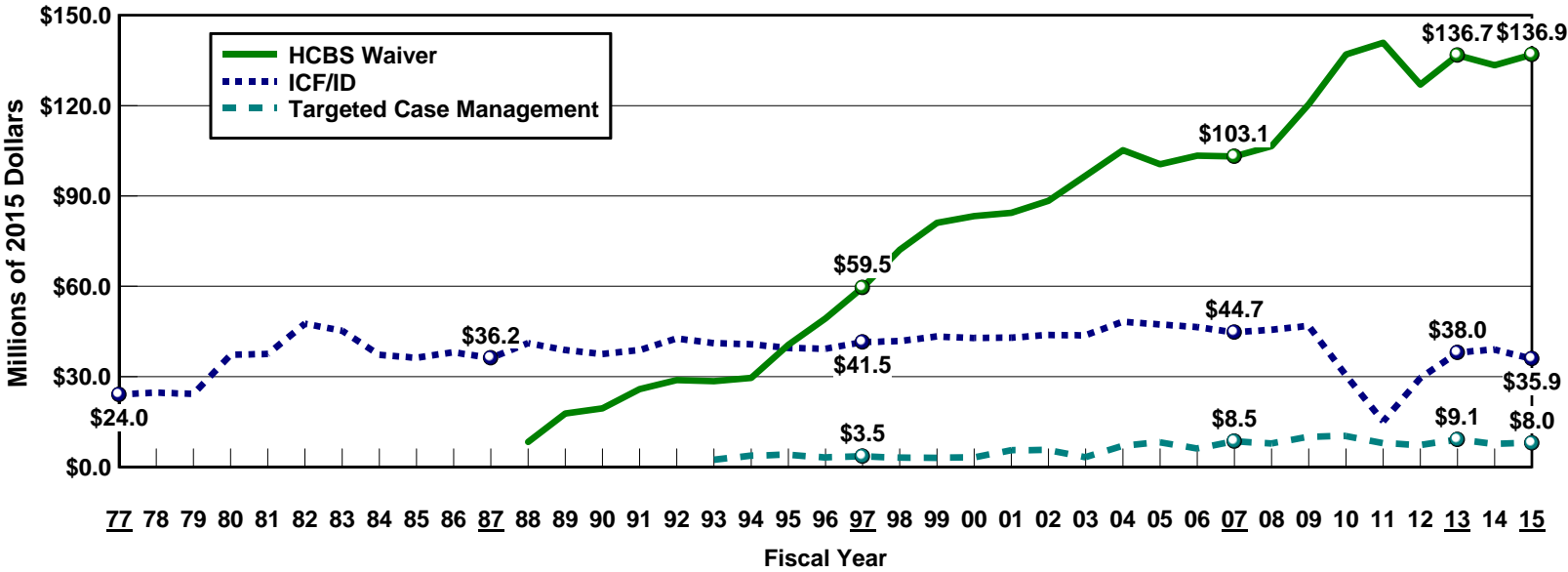
FISCAL EFFORT FOR IDD SERVICES: FY 1977-2015



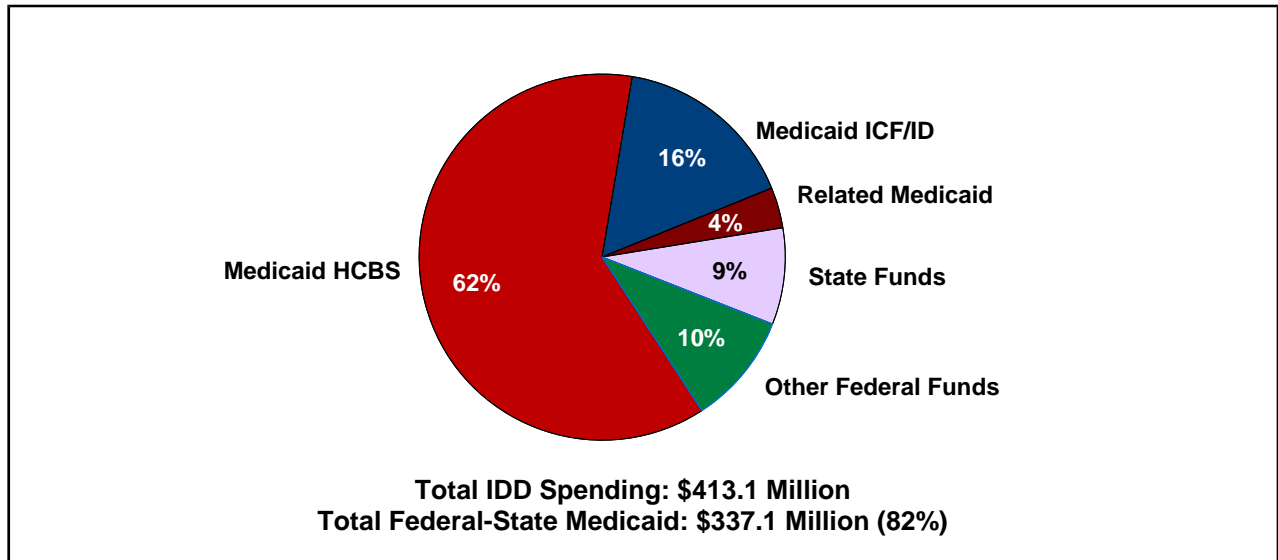
Source: Braddock et al., Coleman Institute and Department of Psychiatry, University of Colorado, 2017.

NEBRASKA

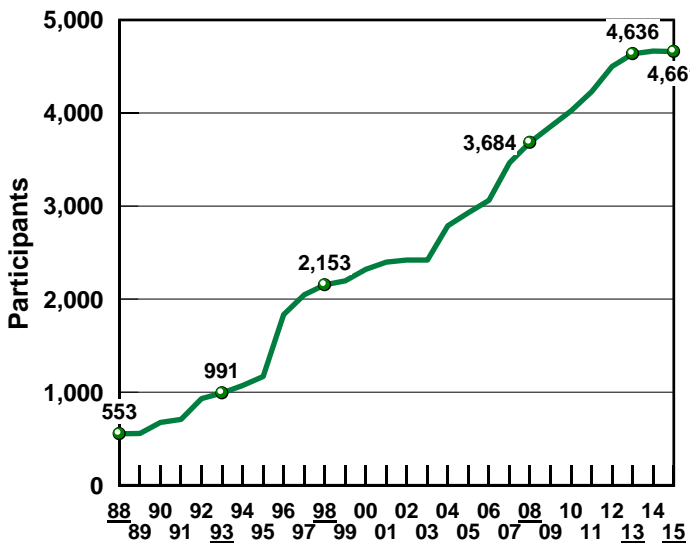
FEDERAL IDD MEDICAID SPENDING BY REVENUE SOURCE



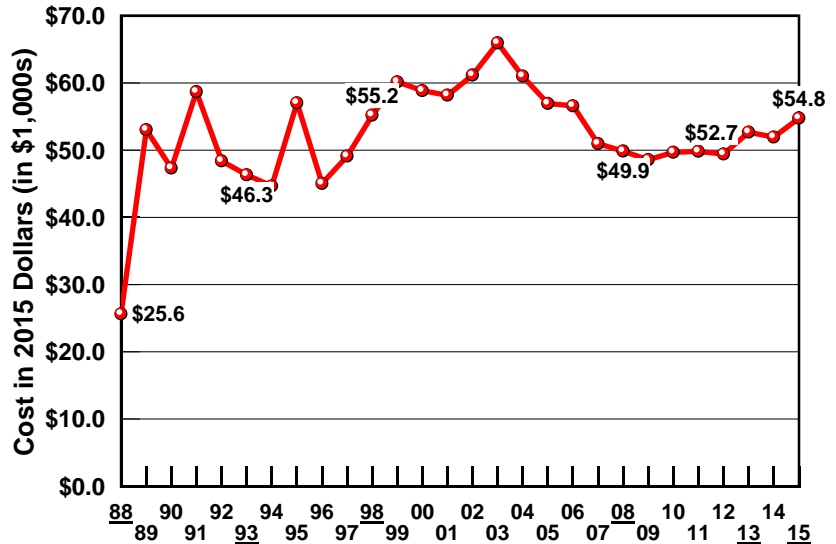
FEDERAL-STATE MEDICAID AS A PERCENTAGE OF TOTAL IDD SPENDING IN FY 2015



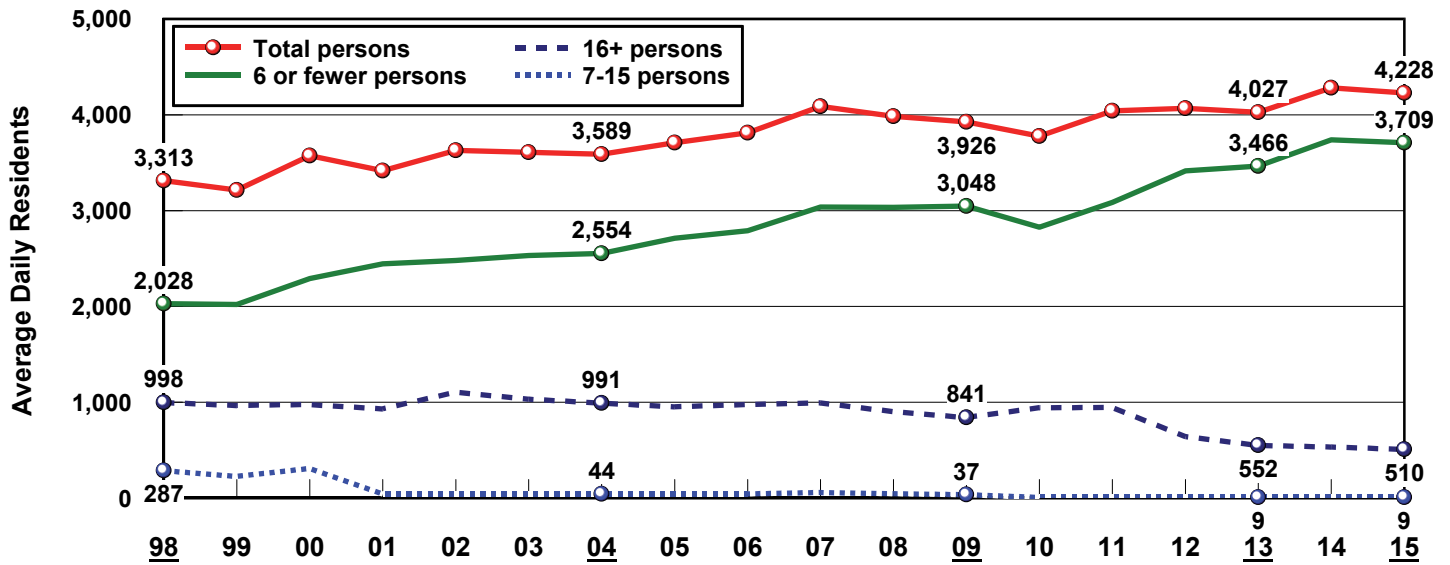
HCBS WAIVER PARTICIPANTS



ADJUSTED WAIVER COST PER PARTICIPANT



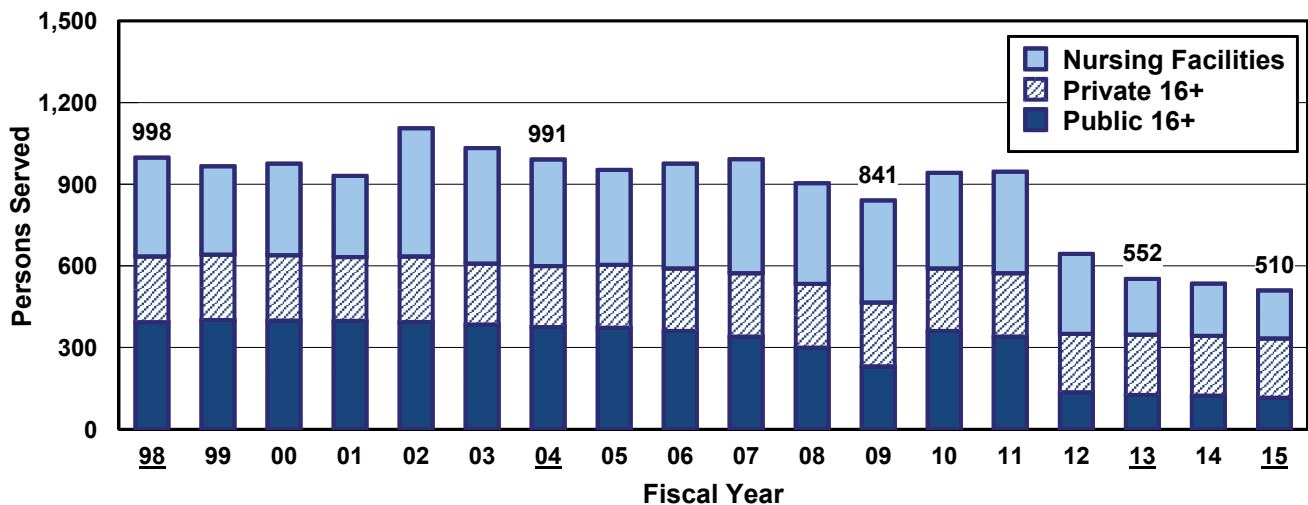
PERSONS WITH IDD BY SIZE OF SETTING: FY 1998-2015



PERSONS SERVED BY SETTING: FY 1998-2015

	1998	1999	2000	2001	2002	2003	2004	2005	2006	2007	2008	2009	2010	2011	2012	2013	2014	2015
TOTAL	3,313	3,215	3,575	3,418	3,629	3,609	3,589	3,709	3,812	4,088	3,985	3,926	3,778	4,042	4,068	4,027	4,282	4,228
16+ PERSONS	998	966	976	931	1,106	1,033	991	953	976	992	904	841	942	946	644	552	535	510
Nursing Facilities	364	325	337	299	472	425	392	349	386	419	370	376	352	373	294	205	192	177
State Institutions	393	401	399	398	394	385	375	373	361	341	300	231	361	341	136	126	124	116
Private ICF/ID	241	240	240	234	240	223	224	231	229	232	234	234	229	232	214	221	219	217
Other Residential	0	0	0	0	0	0	0	0	0	0	0	0	0	0	0	0	0	0
7-15 PERSONS	287	228	309	44	44	44	44	44	44	58	46	37	9	9	9	9	8	9
Public ICF/ID	0	0	0	0	0	0	0	0	0	0	0	0	0	0	0	0	0	0
Private ICF/ID	9	9	9	9	9	9	9	9	9	9	9	9	9	9	9	9	8	9
Other Residential	278	219	300	35	35	35	35	35	35	49	37	28	0	0	0	0	0	0
<6 PERSONS	2,028	2,021	2,290	2,443	2,479	2,532	2,554	2,712	2,792	3,038	3,035	3,048	2,827	3,087	3,415	3,466	3,739	3,709
Public ICF/ID	0	0	0	0	0	0	0	0	0	0	0	0	0	0	0	0	0	0
Private ICF/ID	0	0	0	0	0	0	0	0	0	0	0	0	35	49	28	35	23	27
Supported Living	825	824	842	833	826	818	778	762	773	777	768	798	773	777	1,027	1,044	1,091	1,097
Other Residential	1,203	1,197	1,448	1,610	1,653	1,714	1,776	1,950	2,019	2,261	2,267	2,250	2,019	2,261	2,360	2,387	2,625	2,585

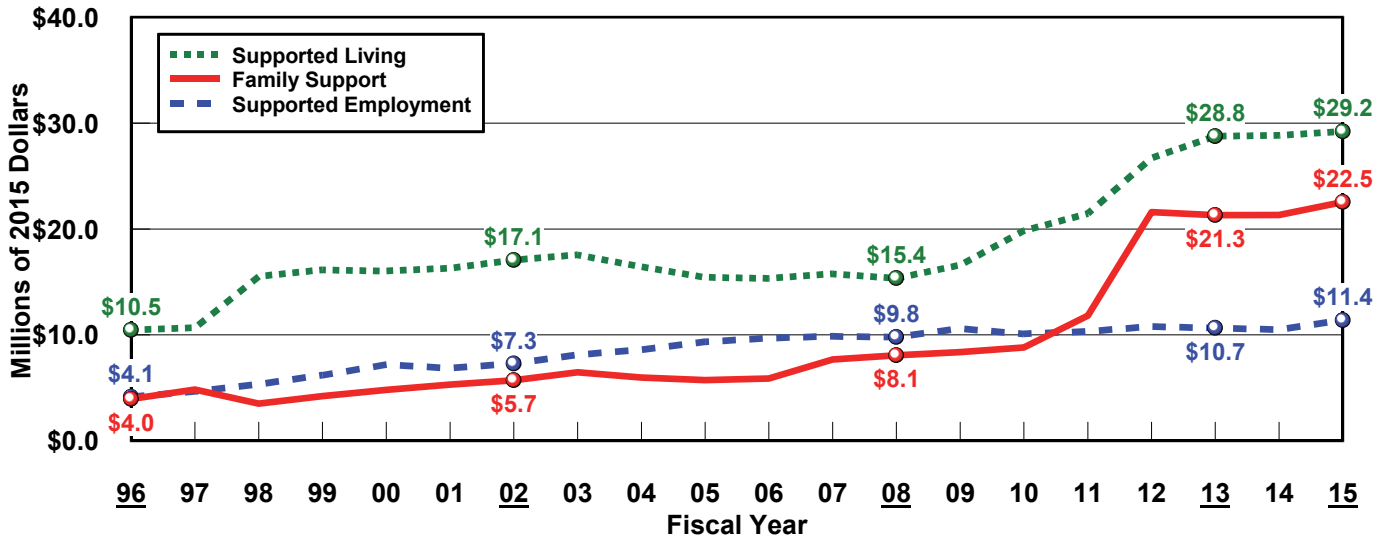
PERSONS IN PUBLIC AND PRIVATE 16+ INSTITUTIONS: FY 1998-2015



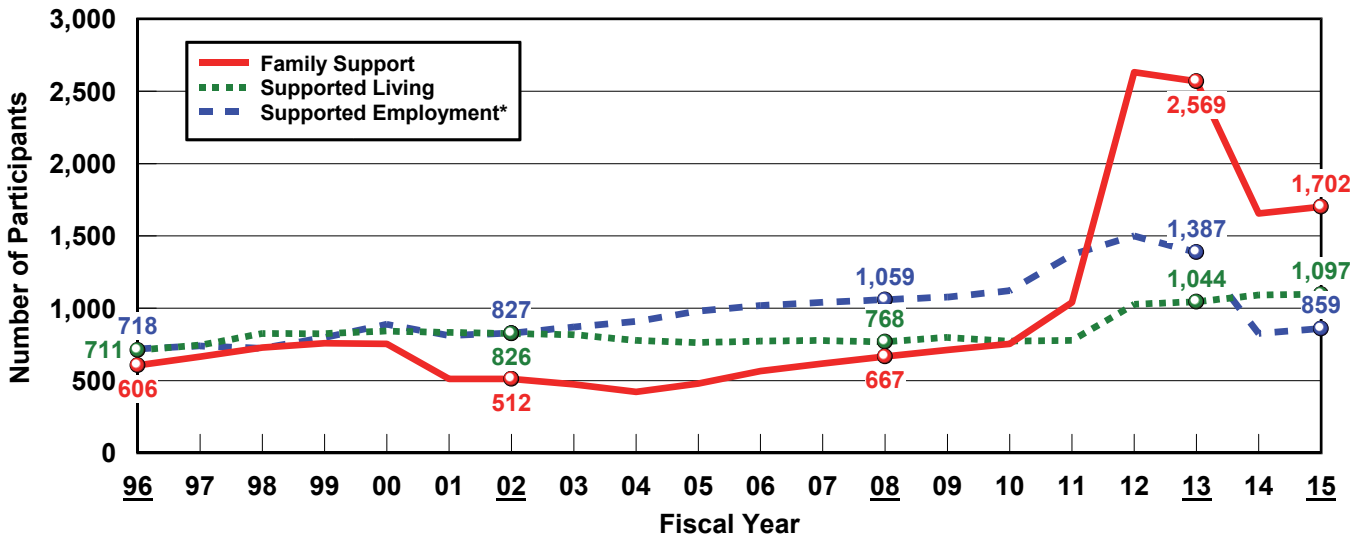
Source: Braddock et al., Coleman Institute and Department of Psychiatry, University of Colorado, 2017.

INDIVIDUAL AND FAMILY SUPPORT

SPENDING: FY 1996-2015

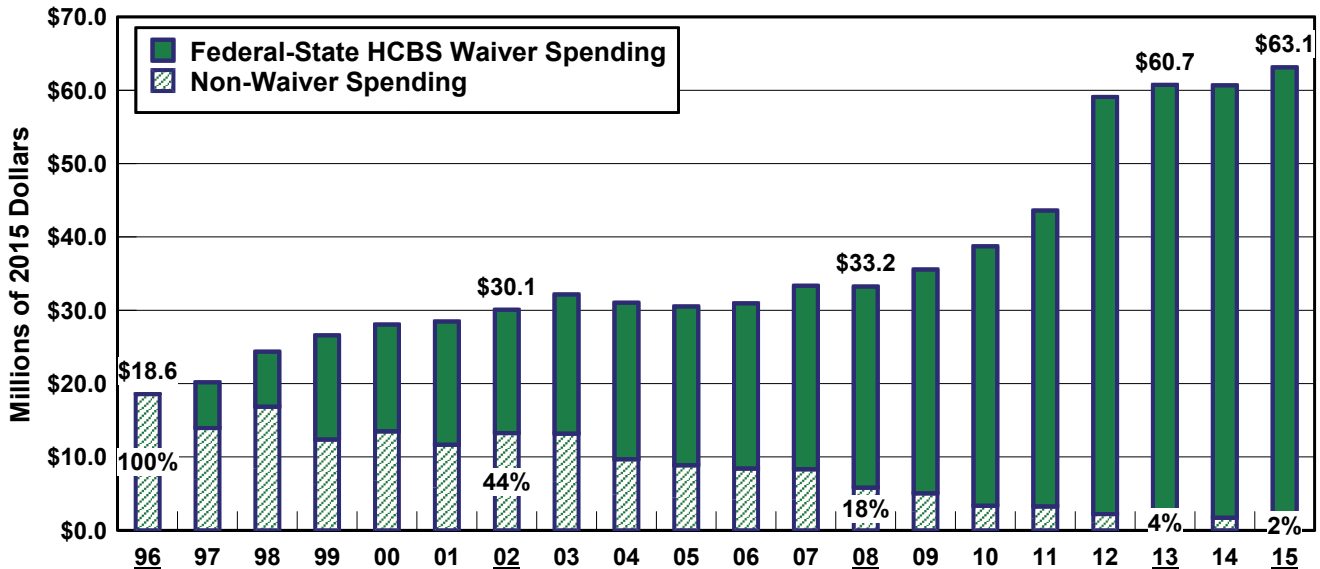


PARTICIPANTS: FY 1996-2015



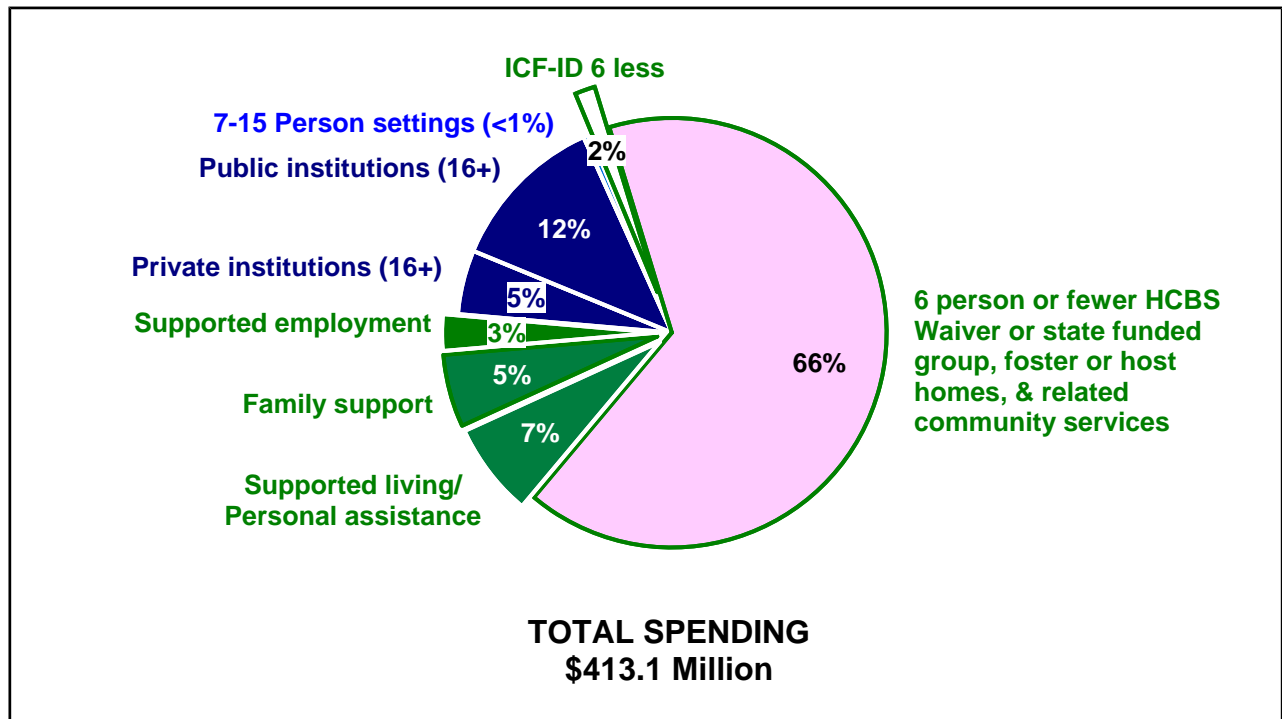
*Does not include 134 follow-along work support workers in 2014 and 135 workers in 2015.

SUPPORTED LIVING, FAMILY SUPPORT AND SUPPORTED EMPLOYMENT SPENDING: FY 1996-2015

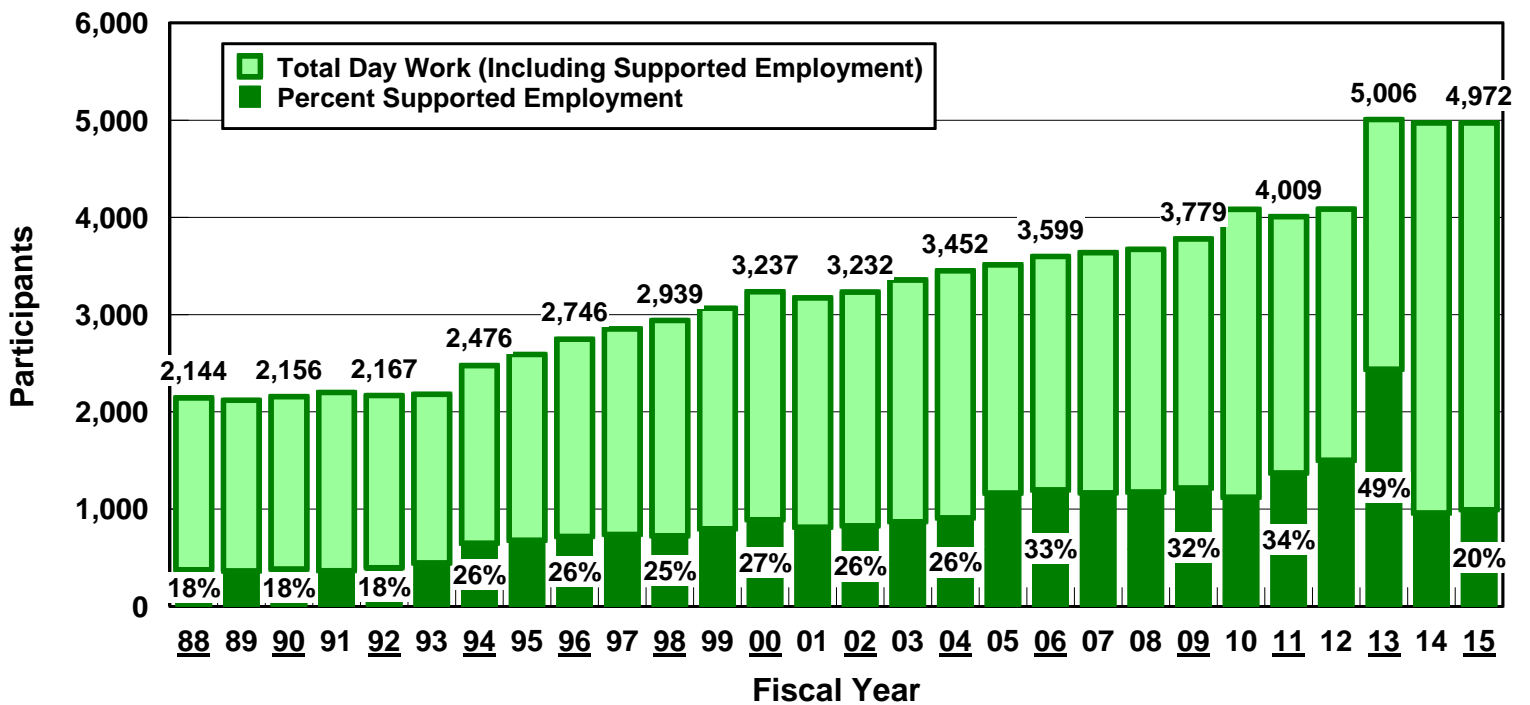


Source: Braddock et al., Coleman Institute and Department of Psychiatry, University of Colorado, 2017.

SUPPORTED LIVING, FAMILY SUPPORT, AND SUPPORTED EMPLOYMENT AS A PERCENTAGE OF TOTAL SPENDING: FY 2015



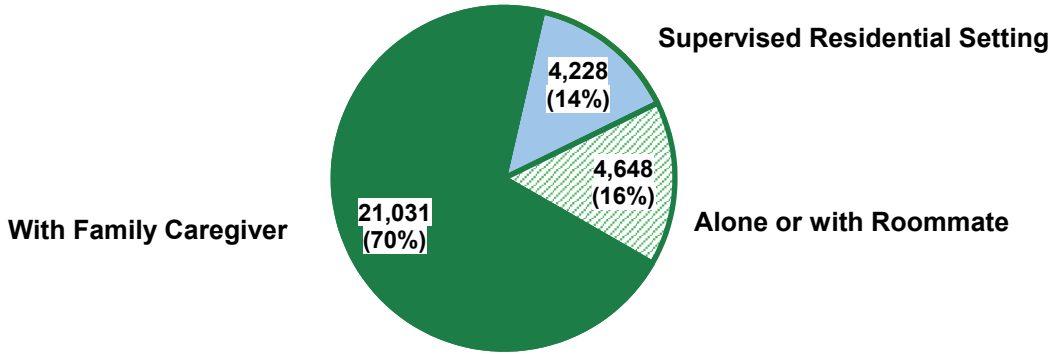
TOTAL DAY/WORK AND SUPPORTED EMPLOYMENT PARTICIPANTS : FY 1988-2015



Source: Braddock et al., Coleman Institute and Department of Psychiatry, University of Colorado, 2017.

<http://stateofthestates.org>

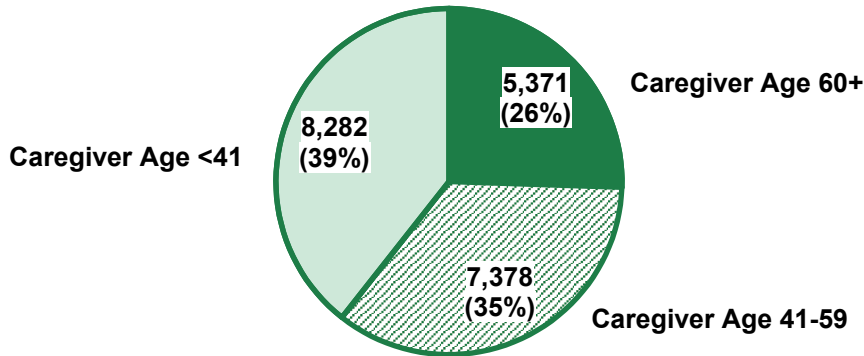
ESTIMATED NUMBER OF INDIVIDUALS WITH IDD BY LIVING ARRANGEMENT: FY 2015



TOTAL: 29,907 PERSONS

Braddock et al. 2016, based on Fujiura 2008, 2012

ESTIMATED NUMBER OF INDIVIDUALS WITH IDD BY AGE GROUP LIVING WITH FAMILY CAREGIVERS: FY 2015



TOTAL: 21,031 PERSONS

Braddock et al. 2016, based on Fujiura 2008, 2012

ESTIMATED NUMBER OF IDD CAREGIVING FAMILIES AND FAMILIES SUPPORTED BY IDD AGENCIES: FY 1988-2015

