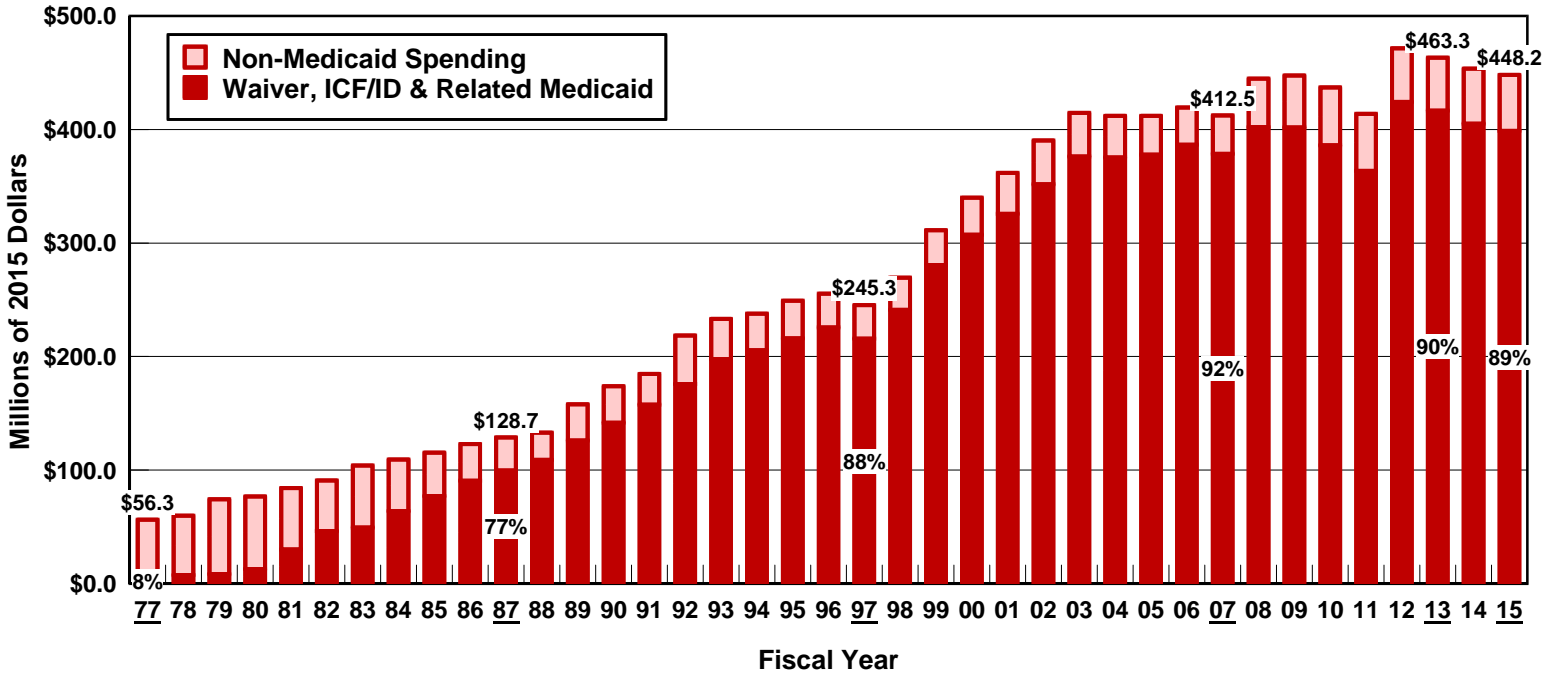
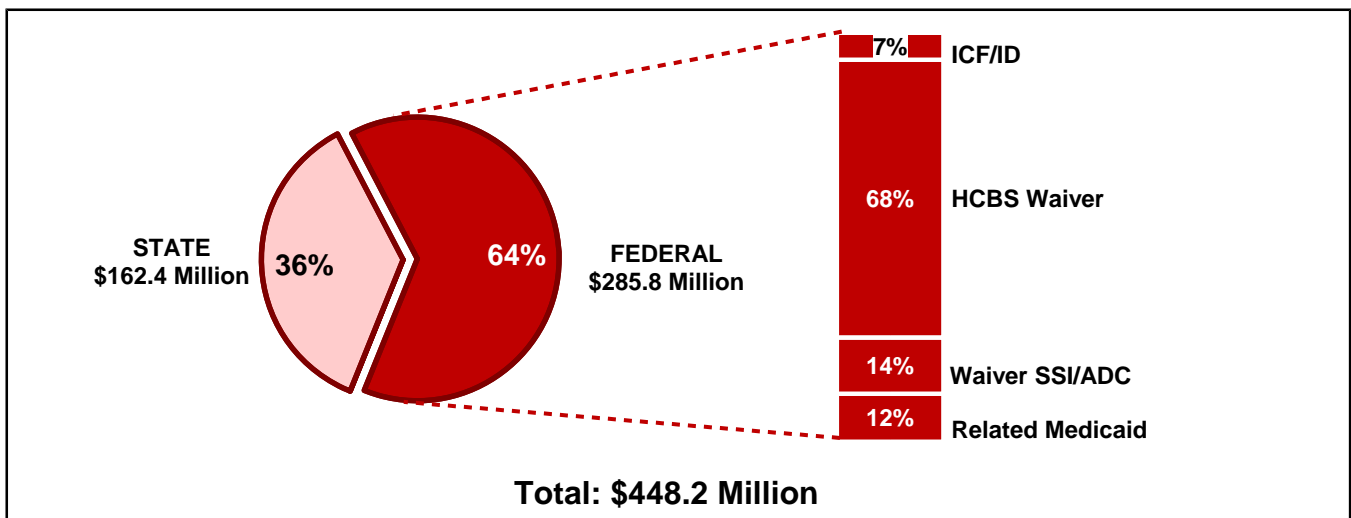


MAINE

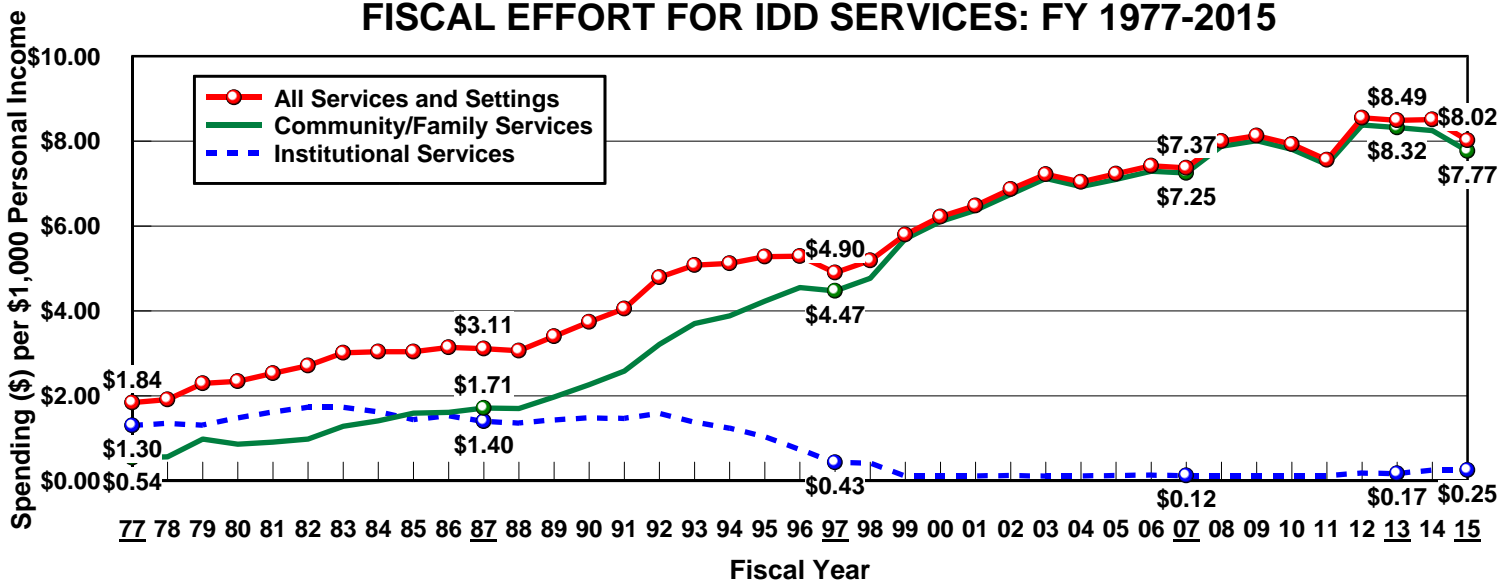
TOTAL PUBLIC IDD SPENDING FOR SERVICES: FY 1977-2015



PUBLIC IDD SPENDING BY REVENUE SOURCE: FY 2015



FISCAL EFFORT FOR IDD SERVICES: FY 1977-2015

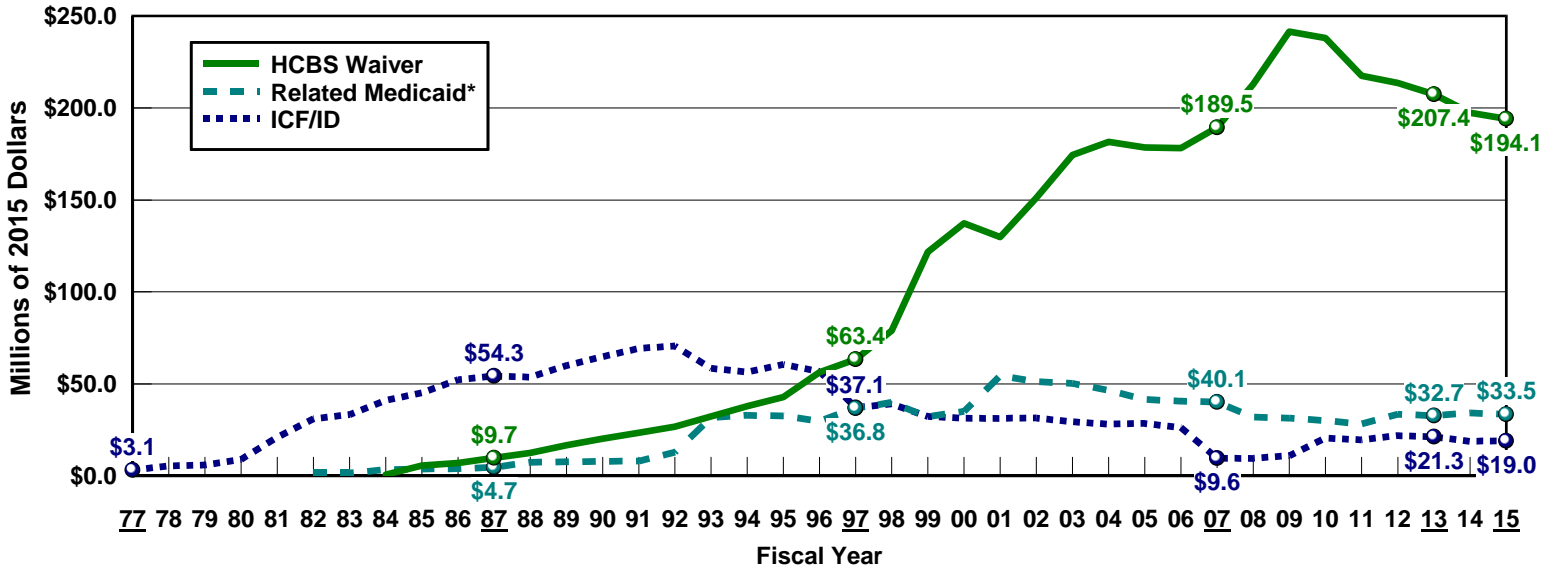


Source: Braddock et al., Coleman Institute and Department of Psychiatry, University of Colorado, 2017.

<http://stateofthestates.org>

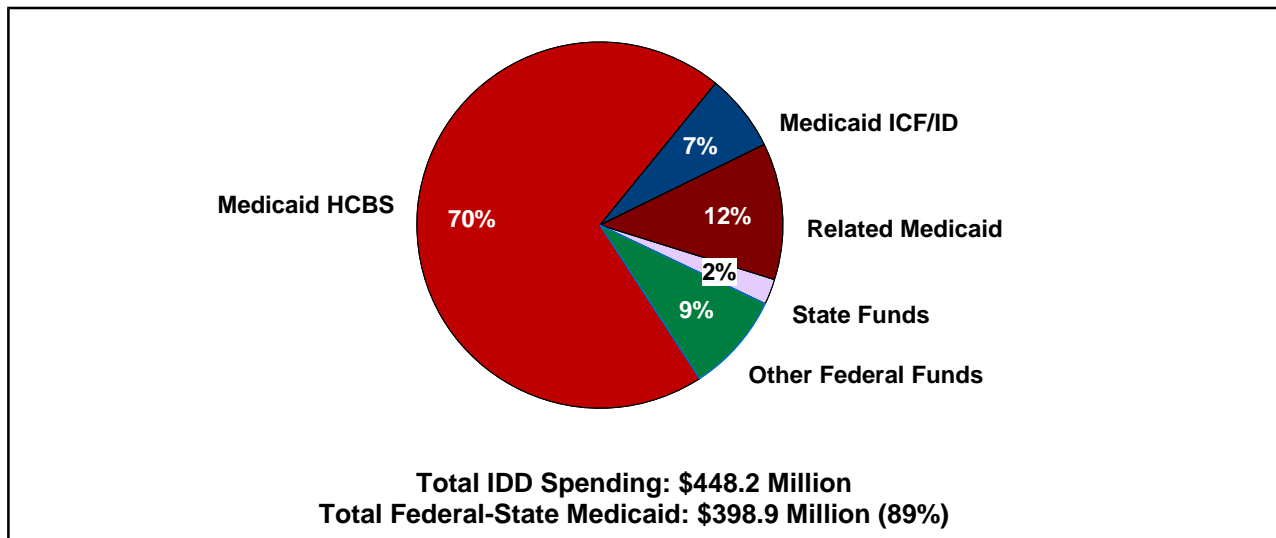
MAINE

FEDERAL IDD MEDICAID SPENDING BY REVENUE SOURCE

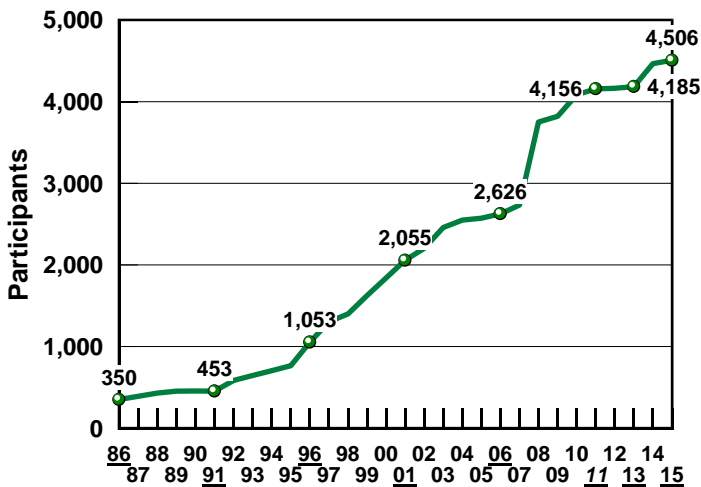


*In 2015, "Related Medicaid" was targeted case management (\$10.0 million), clinic rehab (\$9.90 million), personal assistant (\$1.35 million) and administration (\$12.21 million).

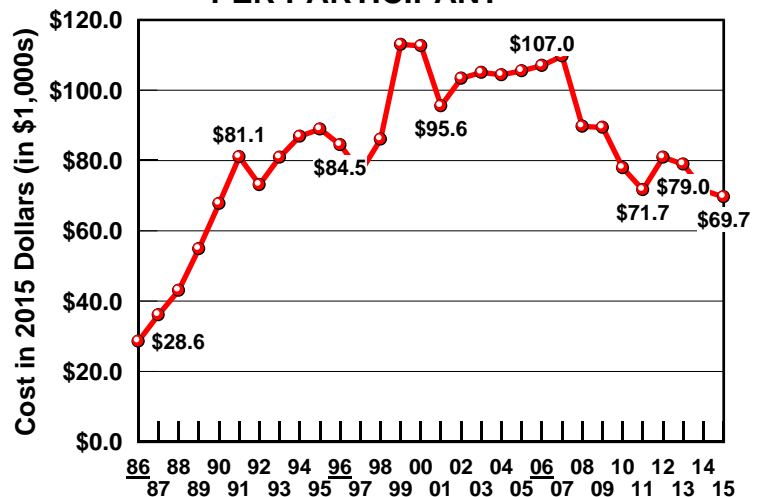
FEDERAL-STATE MEDICAID AS A PERCENTAGE OF TOTAL IDD SPENDING IN FY 2015



HCBS WAIVER PARTICIPANTS



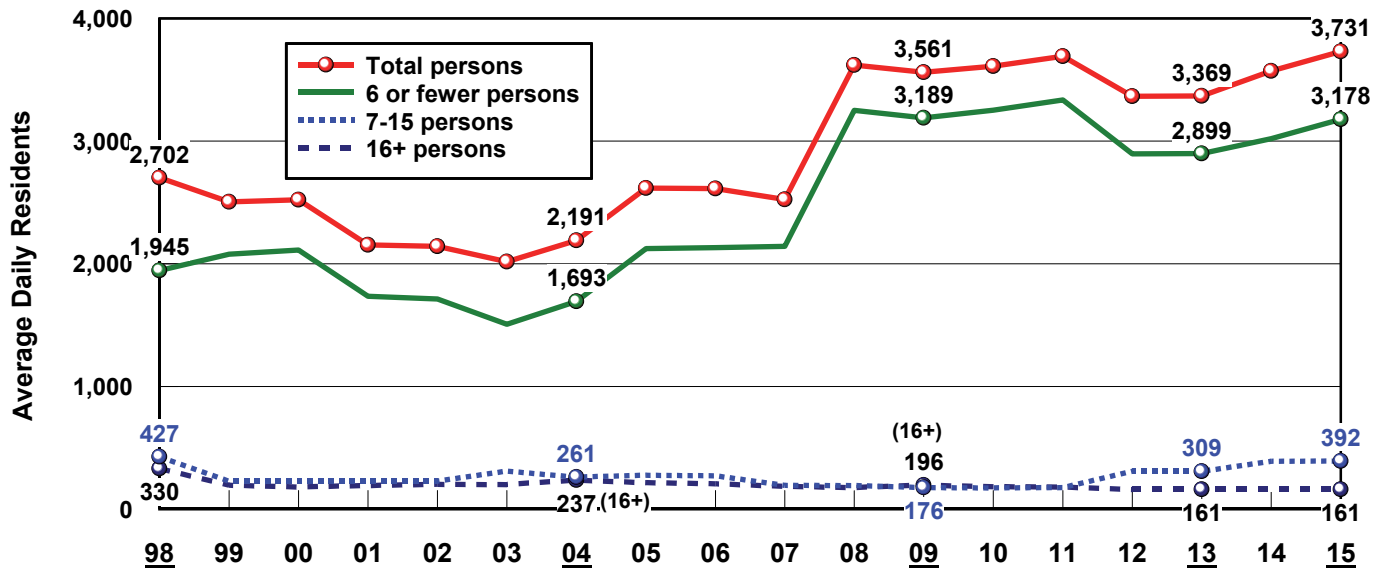
ADJUSTED WAIVER COST PER PARTICIPANT



Source: Braddock et al., Coleman Institute and Department of Psychiatry, University of Colorado, 2017.

MAINE

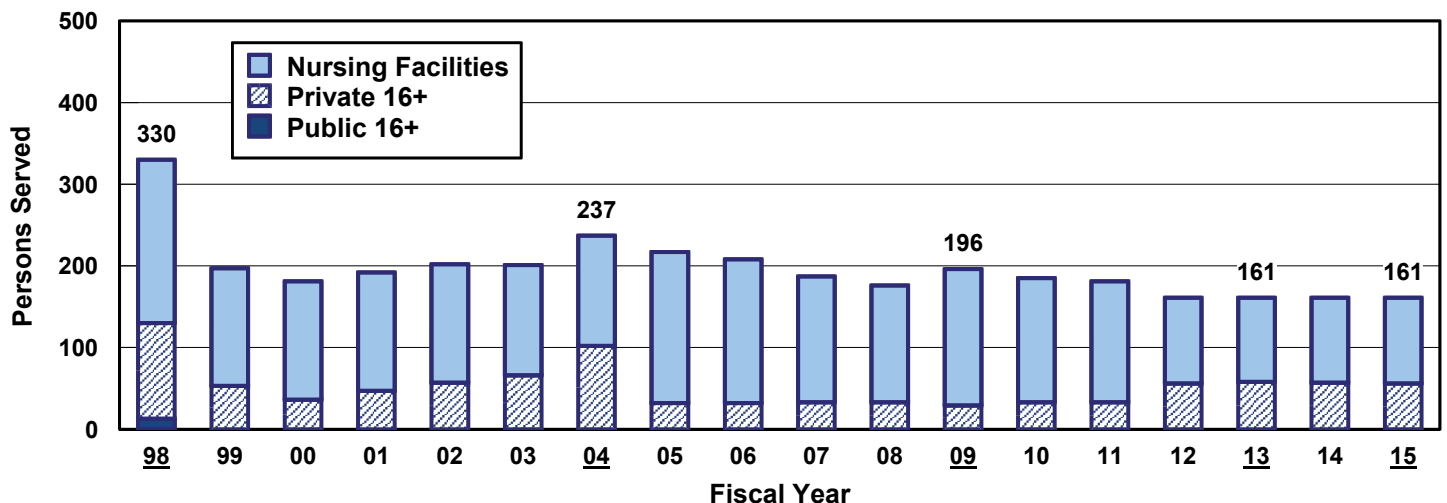
PERSONS WITH IDD BY SIZE OF SETTING: FY 1998-2015



PERSONS SERVED BY SETTING: FY 1998-2015

	1998	1999	2000	2001	2002	2003	2004	2005	2006	2007	2008	2009	2010	2011	2012	2013	2014	2015
TOTAL	2,702	2,505	2,522	2,155	2,143	2,018	2,191	2,618	2,613	2,524	3,620	3,561	3,611	3,692	3,366	3,369	3,572	3,731
16+ PERSONS	330	197	181	192	202	201	237	217	208	187	176	196	185	181	161	161	161	161
Nursing Facilities	200	144	145	145	145	135	135	185	176	154	143	167	152	148	105	103	104	105
State Institutions	13	0	0	0	0	0	0	0	0	0	0	0	0	0	0	0	0	0
Private ICF/ID	97	37	36	36	36	32	32	32	32	33	33	29	33	33	56	58	57	56
Other Residential	20	16	0	11	21	34	70	0	0	0	0	0	0	0	0	0	0	0
7-15 PERSONS	427	229	228	228	228	311	261	277	273	194	193	176	174	175	309	309	390	392
Public ICF/ID	12	10	11	11	11	8	0	0	0	0	0	0	0	0	0	0	0	0
Private ICF/ID	157	118	120	120	120	141	141	120	120	119	119	119	119	119	99	99	104	111
Other Residential	258	101	97	97	97	162	120	157	153	75	74	57	55	56	210	210	286	281
<6 PERSONS	1,945	2,079	2,113	1,735	1,713	1,506	1,693	2,124	2,132	2,143	3,251	3,189	3,252	3,336	2,896	2,899	3,021	3,178
Public ICF/ID	12	11	11	11	11	0	0	0	0	0	0	0	0	0	0	0	0	0
Private ICF/ID	102	111	107	107	107	40	28	28	28	43	39	28	18	18	18	18	11	11
Supported Living	400	390	380	460	526	566	616	661	706	745	780	790	850	909	901	901	633	712
Other Residential	1,431	1,567	1,615	1,157	1,069	900	1,049	1,435	1,398	1,355	2,432	2,371	2,384	2,409	1,977	1,980	2,377	2,455

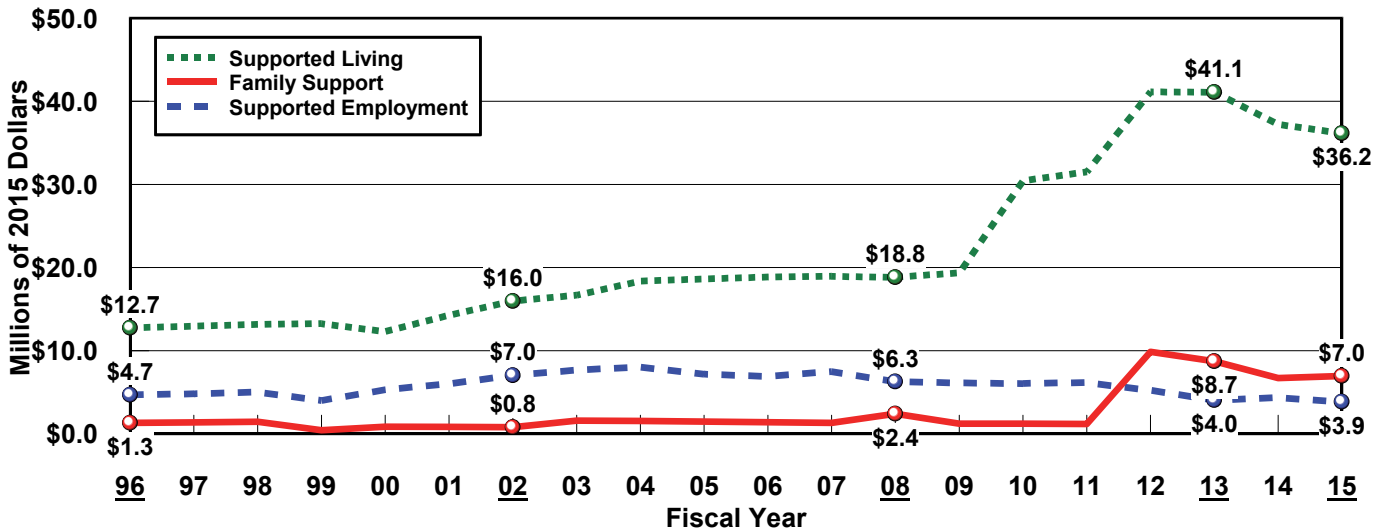
PERSONS IN PUBLIC AND PRIVATE 16+ INSTITUTIONS: FY 1998-2015



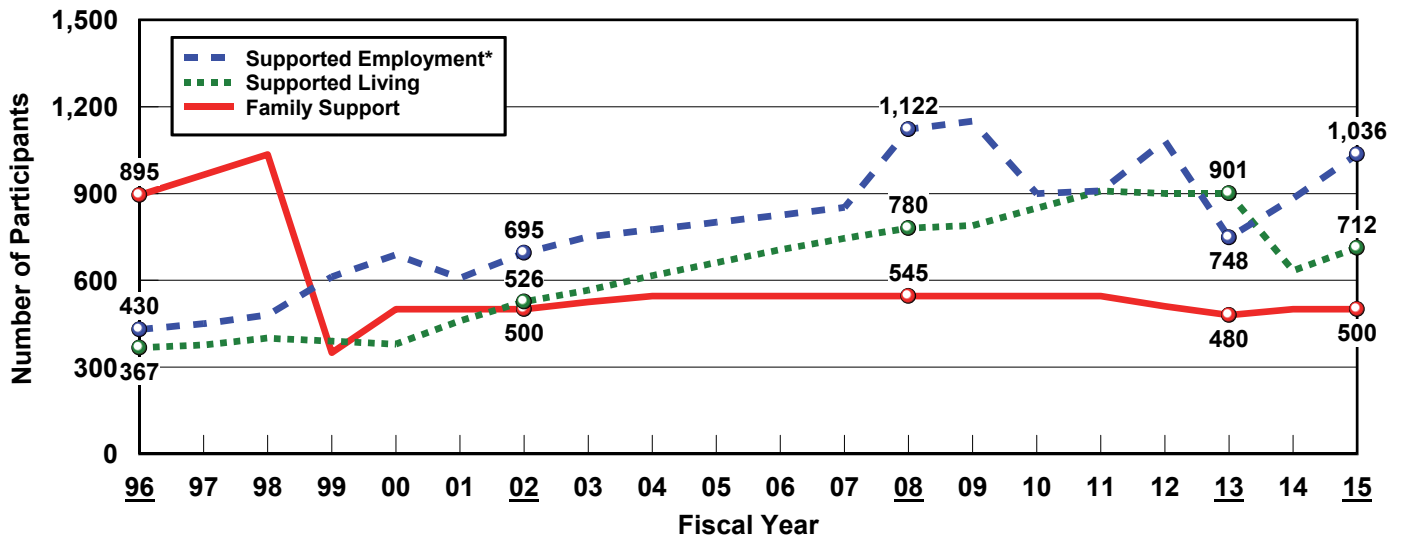
INDIVIDUAL AND FAMILY SUPPORT

MAINE

SPENDING: FY 1996-2015

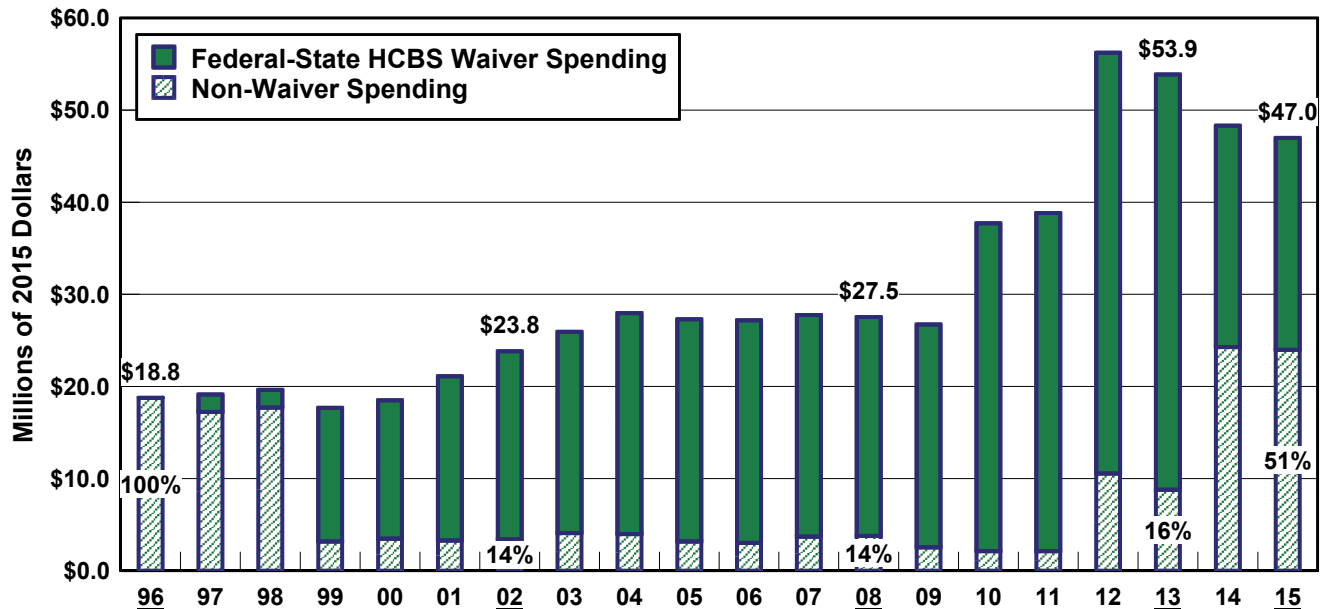


PARTICIPANTS: FY 1996-2015



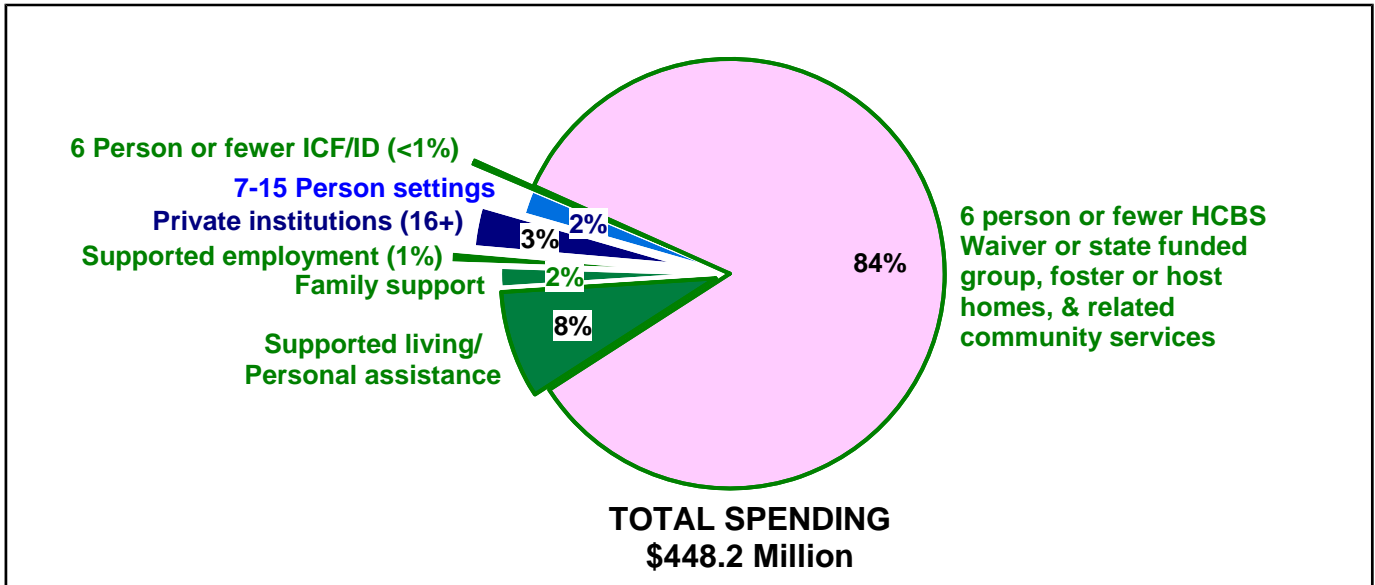
*Does not include 150 follow-along work supported workers in 2014 and 2015.

SUPPORTED LIVING, FAMILY SUPPORT AND SUPPORTED EMPLOYMENT SPENDING: FY 1996-2015

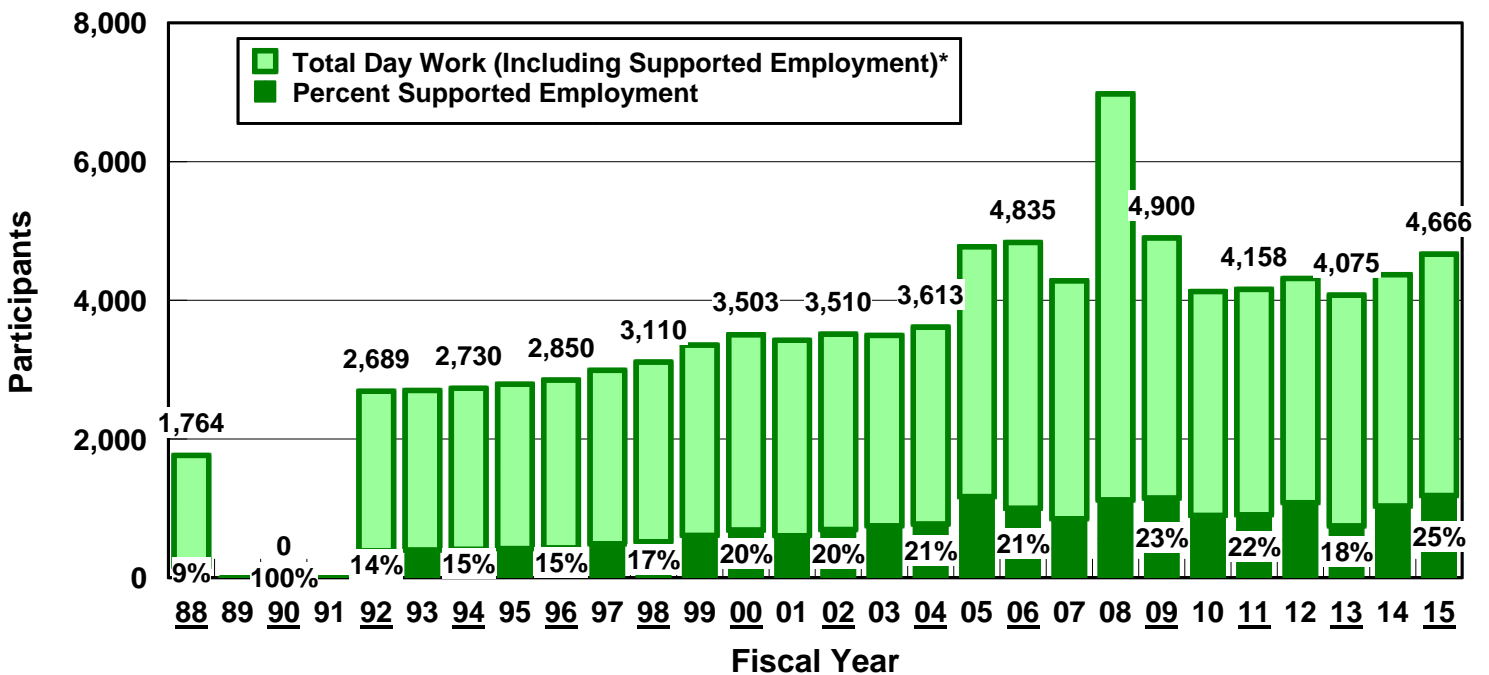


Source: Braddock et al., Coleman Institute and Department of Psychiatry, University of Colorado, 2017.

SUPPORTED LIVING, FAMILY SUPPORT, AND SUPPORTED EMPLOYMENT AS A PERCENTAGE OF TOTAL SPENDING: FY 2015



TOTAL DAY/WORK AND SUPPORTED EMPLOYMENT PARTICIPANTS : FY 1988-2015

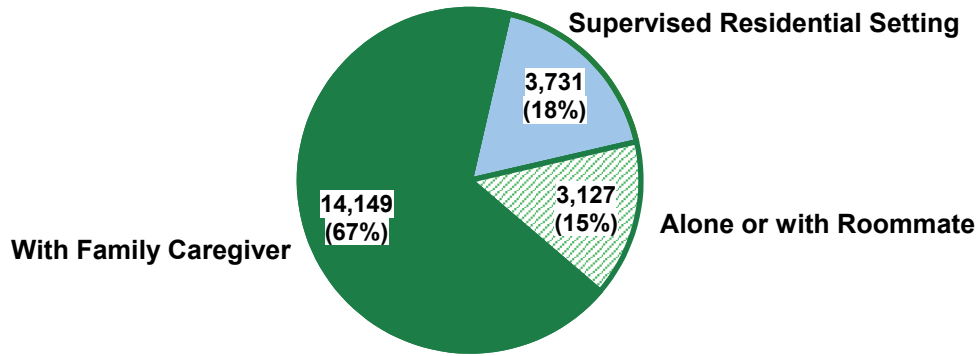


*State did not report day/work or supported employment data in 1989-1991.

Source: Braddock et al., Coleman Institute and Department of Psychiatry, University of Colorado, 2017.

<http://stateofthestates.org>

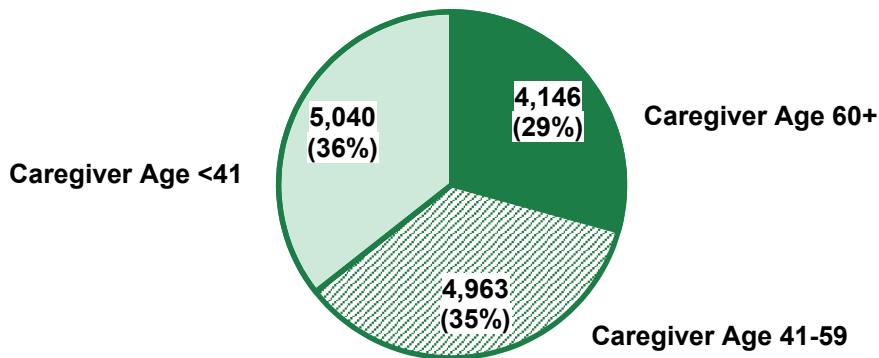
ESTIMATED NUMBER OF INDIVIDUALS WITH IDD BY LIVING ARRANGEMENT: FY 2015



TOTAL: 21,007 PERSONS

Braddock et al. 2016, based on Fujiura 2008, 2012

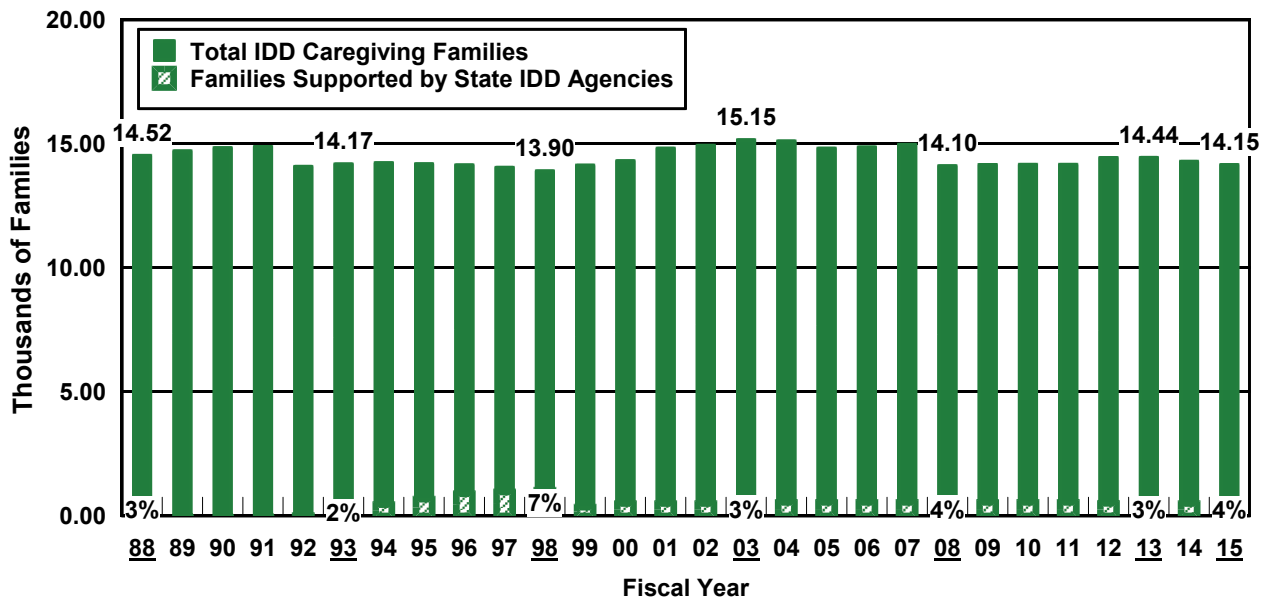
ESTIMATED NUMBER OF INDIVIDUALS WITH IDD BY AGE GROUP LIVING WITH FAMILY CAREGIVERS: FY 2015



TOTAL: 14,149 PERSONS

Braddock et al. 2016, based on Fujiura 2008, 2012

ESTIMATED NUMBER OF IDD CAREGIVING FAMILIES AND FAMILIES SUPPORTED BY IDD AGENCIES: FY 1988-2015



Source: Braddock et al., Coleman Institute and Department of Psychiatry, University of Colorado, 2017.