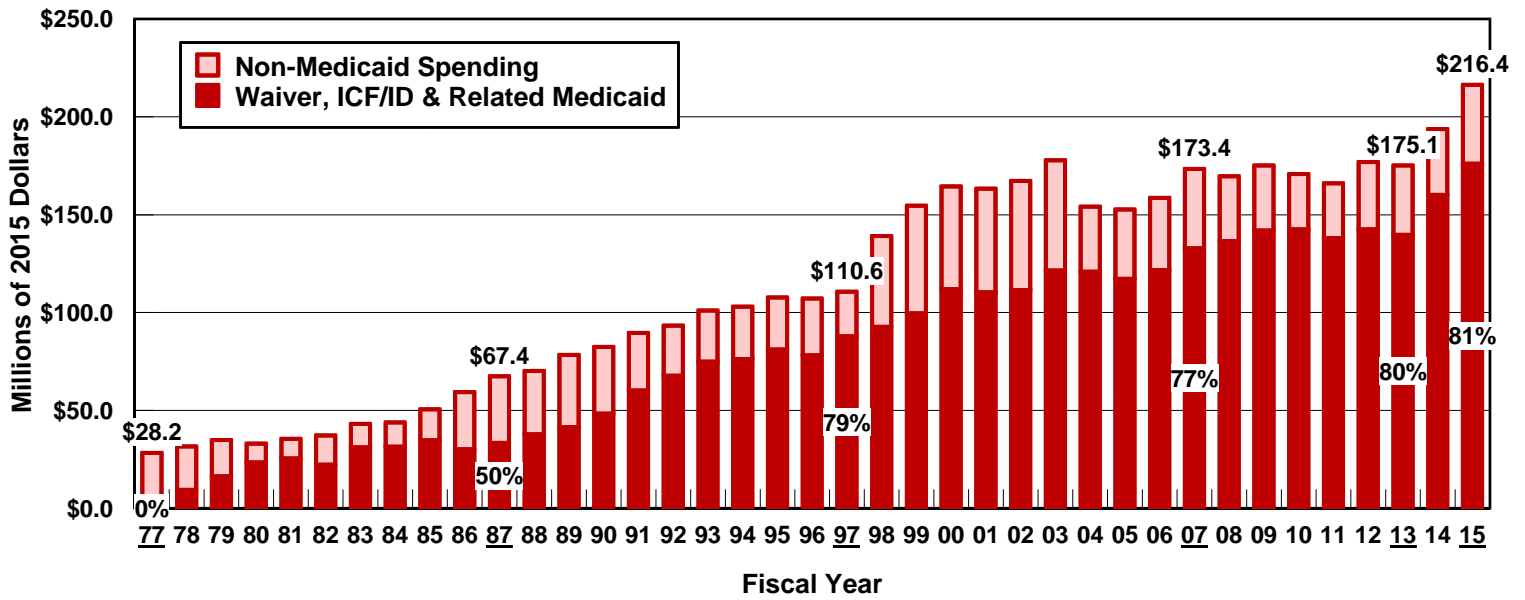
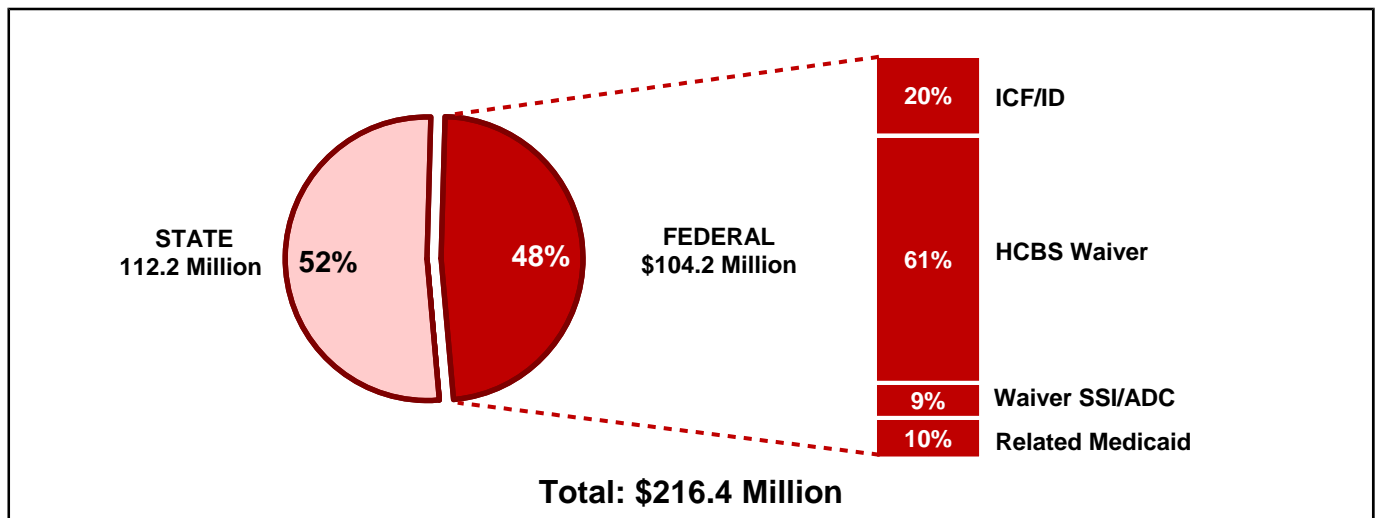


DELAWARE

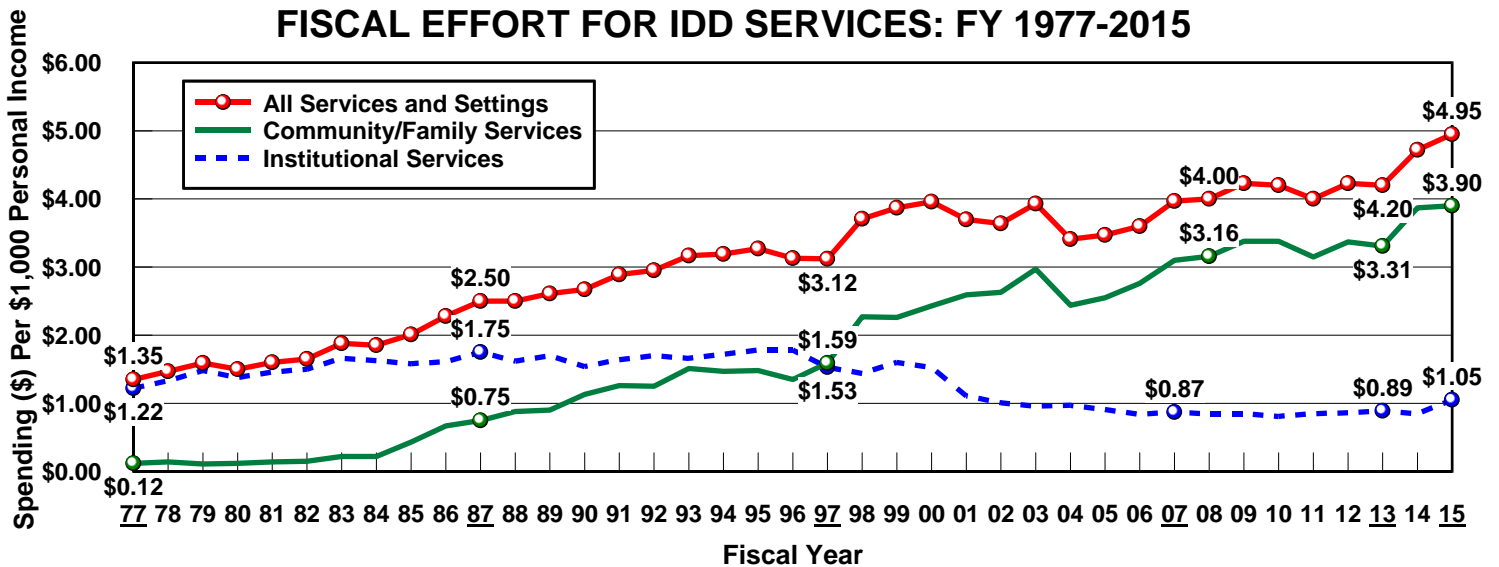
TOTAL PUBLIC IDD SPENDING FOR SERVICES: FY 1977-2015



PUBLIC IDD SPENDING BY REVENUE SOURCE: FY 2015



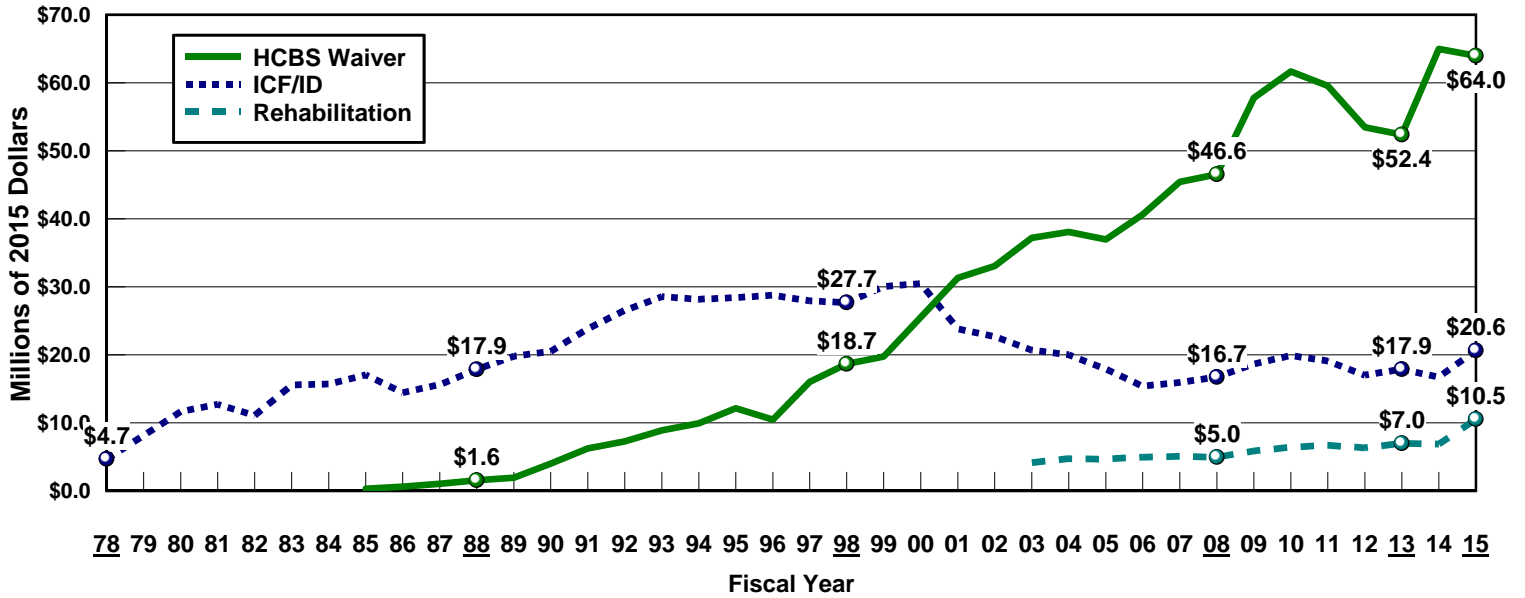
FISCAL EFFORT FOR IDD SERVICES: FY 1977-2015



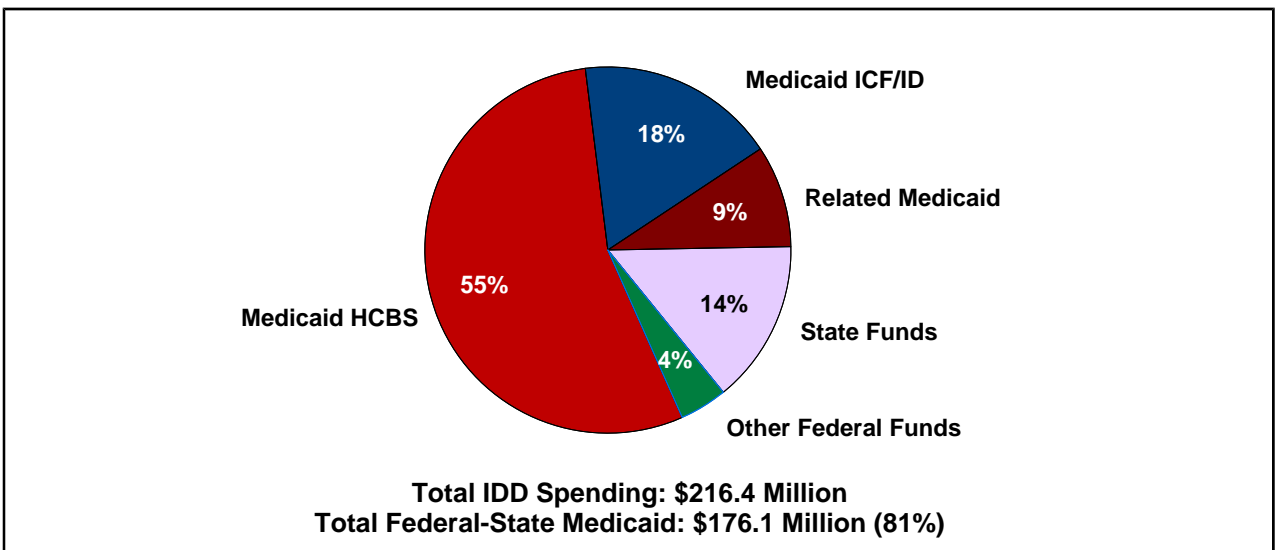
Source: Braddock et al., Coleman Institute and Department of Psychiatry, University of Colorado, 2017.

DELAWARE

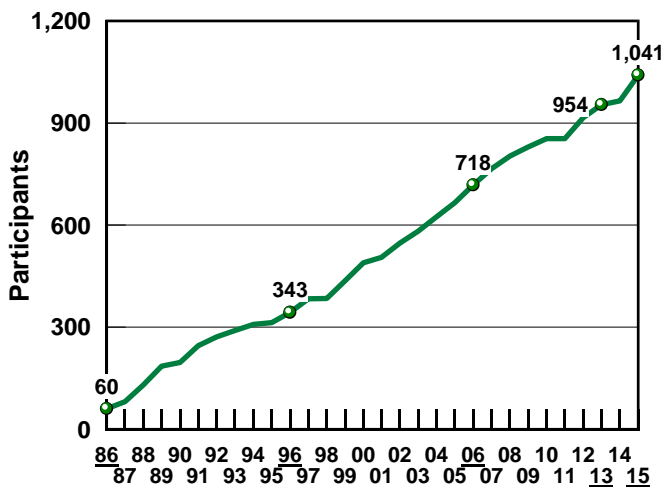
FEDERAL IDD MEDICAID SPENDING BY REVENUE SOURCE



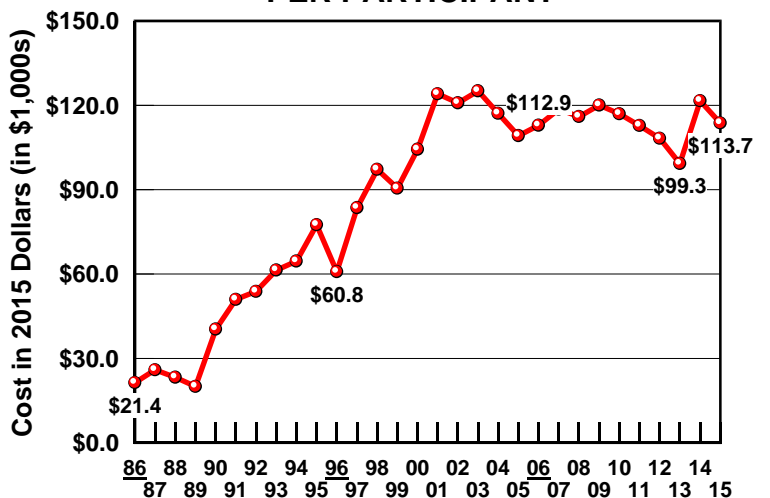
FEDERAL-STATE MEDICAID AS A PERCENTAGE OF TOTAL IDD SPENDING IN FY 2015



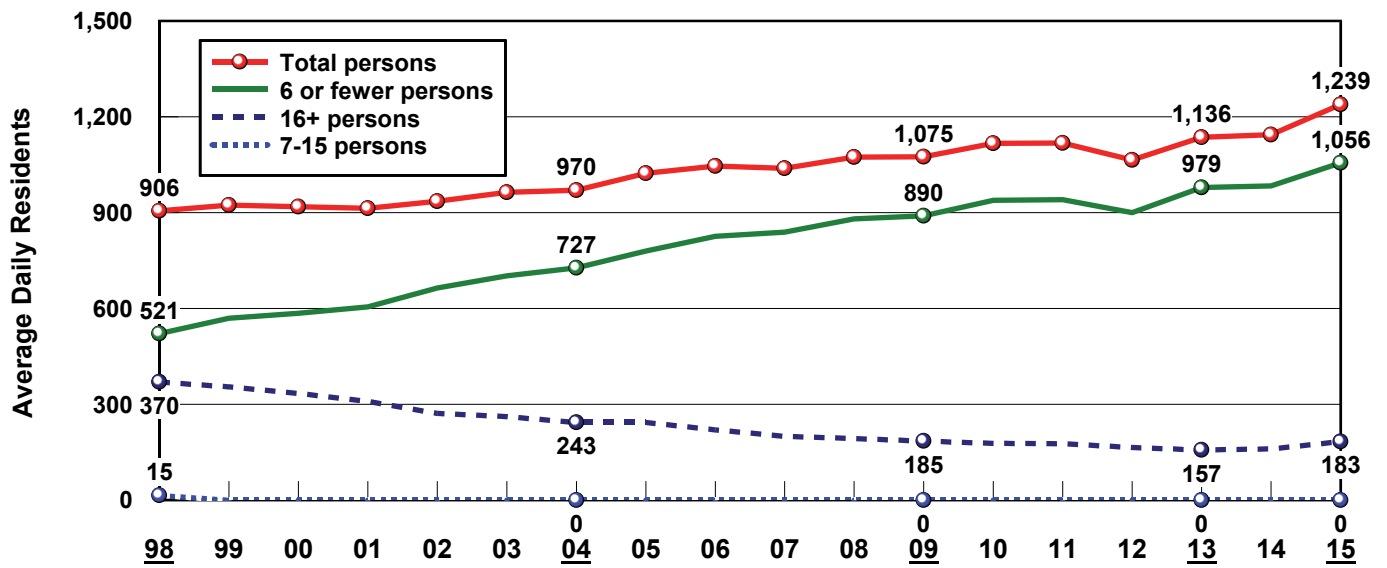
HCBS WAIVER PARTICIPANTS



ADJUSTED WAIVER COST PER PARTICIPANT



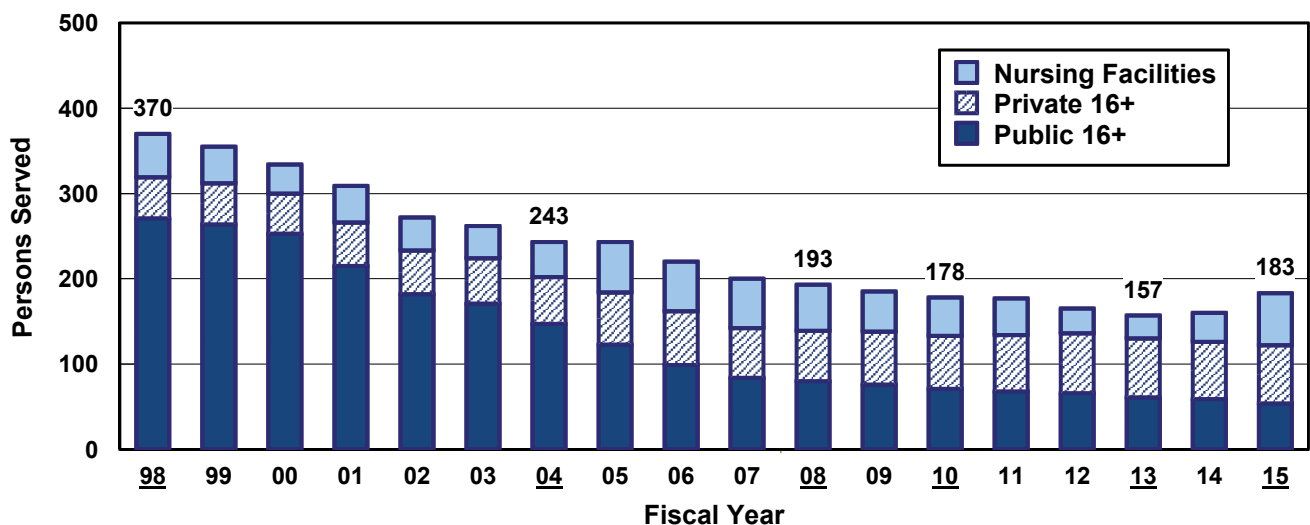
PERSONS WITH IDD BY SIZE OF SETTING: FY 1998-2015



PERSONS SERVED BY SETTING: FY 1998-2015

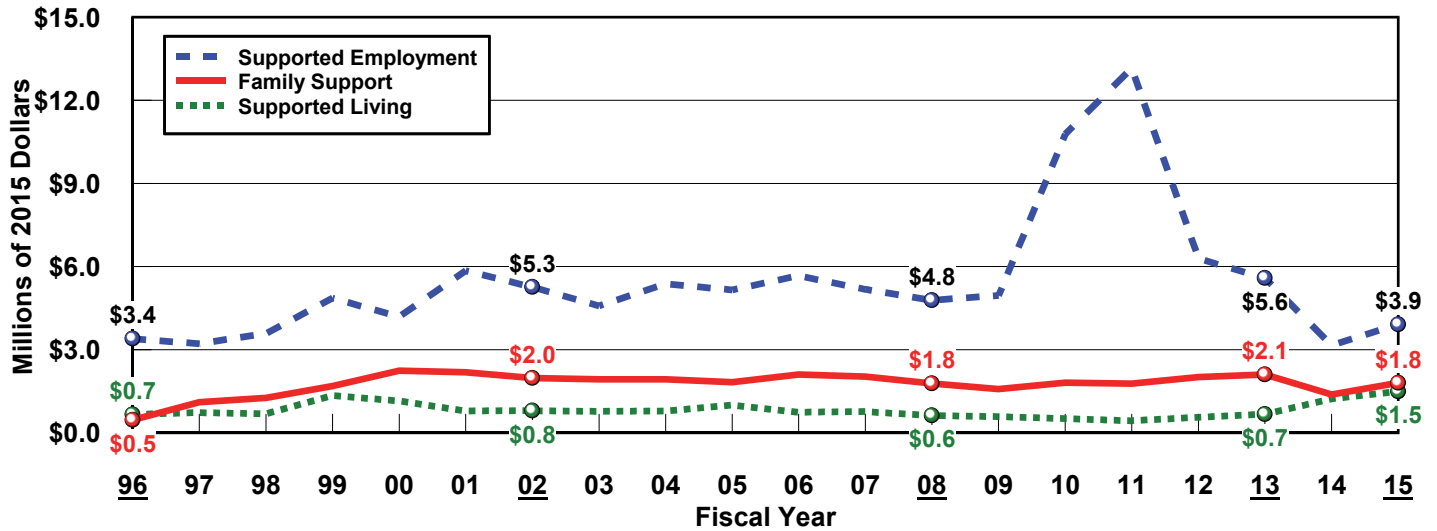
	1998	1999	2000	2001	2002	2003	2004	2005	2006	2007	2008	2009	2010	2011	2012	2013	2014	2015
TOTAL	906	924	919	914	936	964	970	1,023	1,046	1,039	1,074	1,075	1,117	1,118	1,065	1,136	1,144	1,239
16+ PERSONS	370	355	334	309	272	262	243	243	220	200	193	185	178	177	165	157	160	183
Nursing Facilities	51	43	34	43	39	38	41	59	58	58	54	47	45	43	29	27	34	61
State Institutions	271	264	253	215	182	171	147	123	99	84	80	76	71	68	66	61	59	54
Private ICF/ID	48	48	47	51	51	53	55	61	63	58	59	62	62	66	70	69	67	68
Other Residential	0	0	0	0	0	0	0	0	0	0	0	0	0	0	0	0	0	0
7-15 PERSONS	15	0	0	0	0	0	0	0	0	0	0	0	0	0	0	0	0	0
Public ICF/ID	0	0	0	0	0	0	0	0	0	0	0	0	0	0	0	0	0	0
Private ICF/ID	15	0	0	0	0	0	0	0	0	0	0	0	0	0	0	0	0	0
Other Residential	0	0	0	0	0	0	0	0	0	0	0	0	0	0	0	0	0	0
≤6 PERSONS	521	569	585	605	664	702	727	780	826	839	881	890	939	941	900	979	984	1,056
Public ICF/ID	0	0	0	0	0	0	0	0	0	0	0	0	0	0	0	0	0	0
Private ICF/ID	0	0	0	0	0	0	0	0	0	0	0	0	0	0	0	0	0	0
Supported Living	46	45	32	27	26	25	24	27	36	34	27	26	31	28	16	18	27	32
Other Residential	475	524	553	578	638	677	703	753	790	805	854	864	908	913	884	961	957	1,024

PERSONS IN PUBLIC AND PRIVATE 16+ INSTITUTIONS: FY 1998-2015

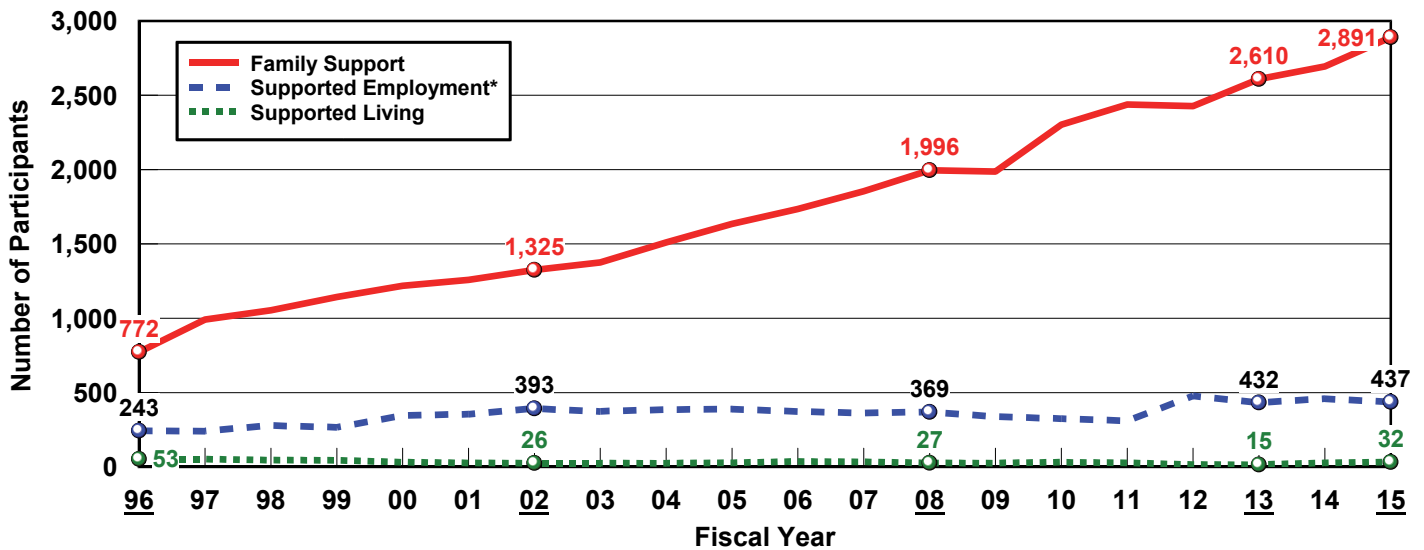


INDIVIDUAL AND FAMILY SUPPORT

SPENDING: FY 1996-2015

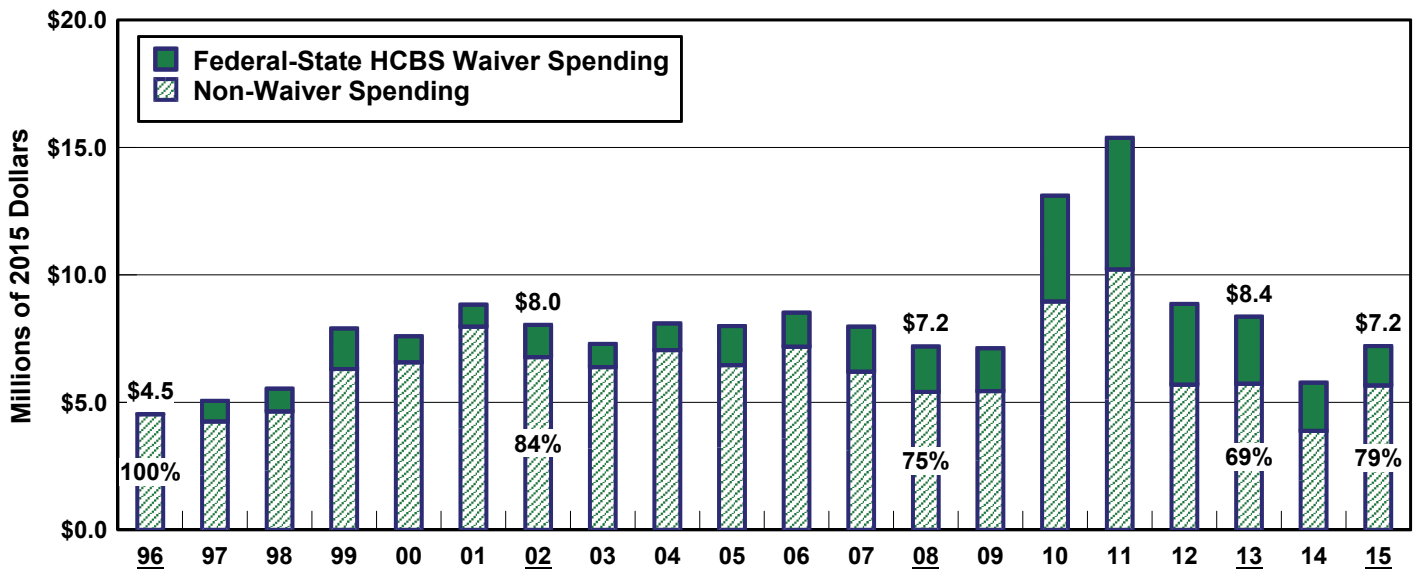


PARTICIPANTS: FY 1996-2015



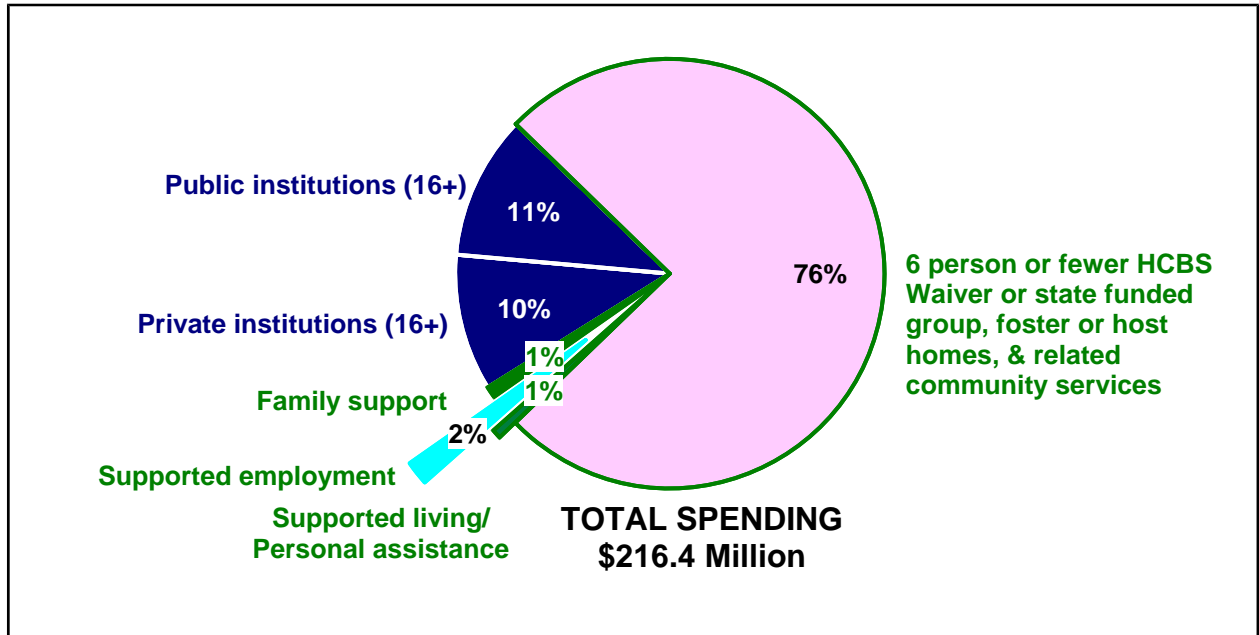
*Does not include 133 follow-along work support workers in 2014 and 560 workers in 2015.

SUPPORTED LIVING, FAMILY SUPPORT AND SUPPORTED EMPLOYMENT SPENDING: FY 1996-2015

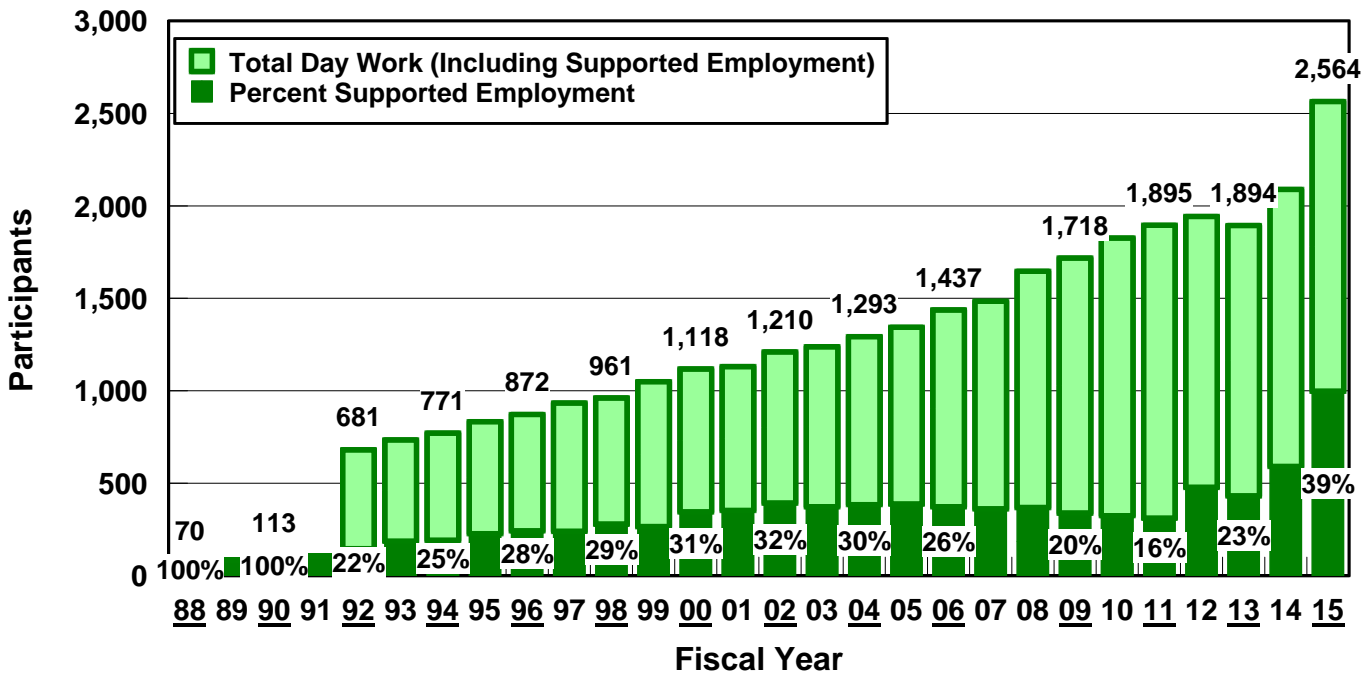


Source: Braddock et al., Coleman Institute and Department of Psychiatry, University of Colorado, 2017.

SUPPORTED LIVING, FAMILY SUPPORT, AND SUPPORTED EMPLOYMENT AS A PERCENTAGE OF TOTAL SPENDING: FY 2015

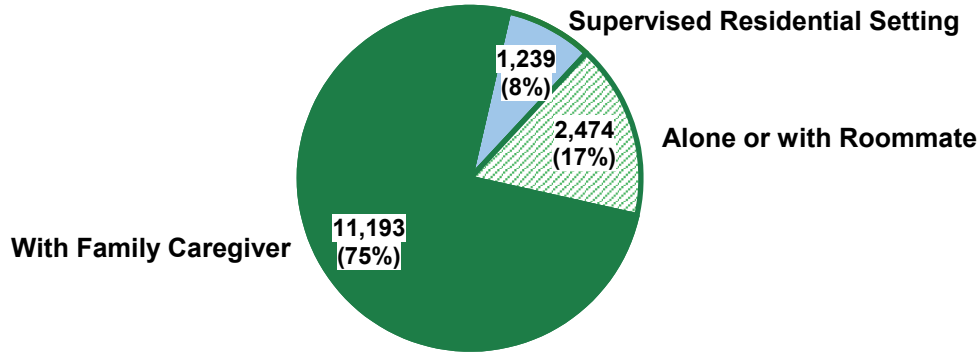


TOTAL DAY/WORK AND SUPPORTED EMPLOYMENT PARTICIPANTS : FY 1988-2015



Source: Braddock et al., Coleman Institute and Department of Psychiatry, University of Colorado, 2017.
<http://stateofthestates.org>

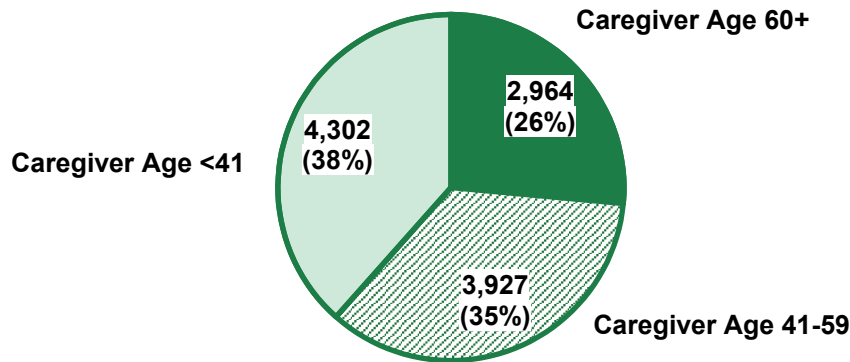
ESTIMATED NUMBER OF INDIVIDUALS WITH IDD BY LIVING ARRANGEMENT: FY 2015



TOTAL: 14,906 PERSONS

Braddock et al. 2016, based on Fujiura 2008, 2012

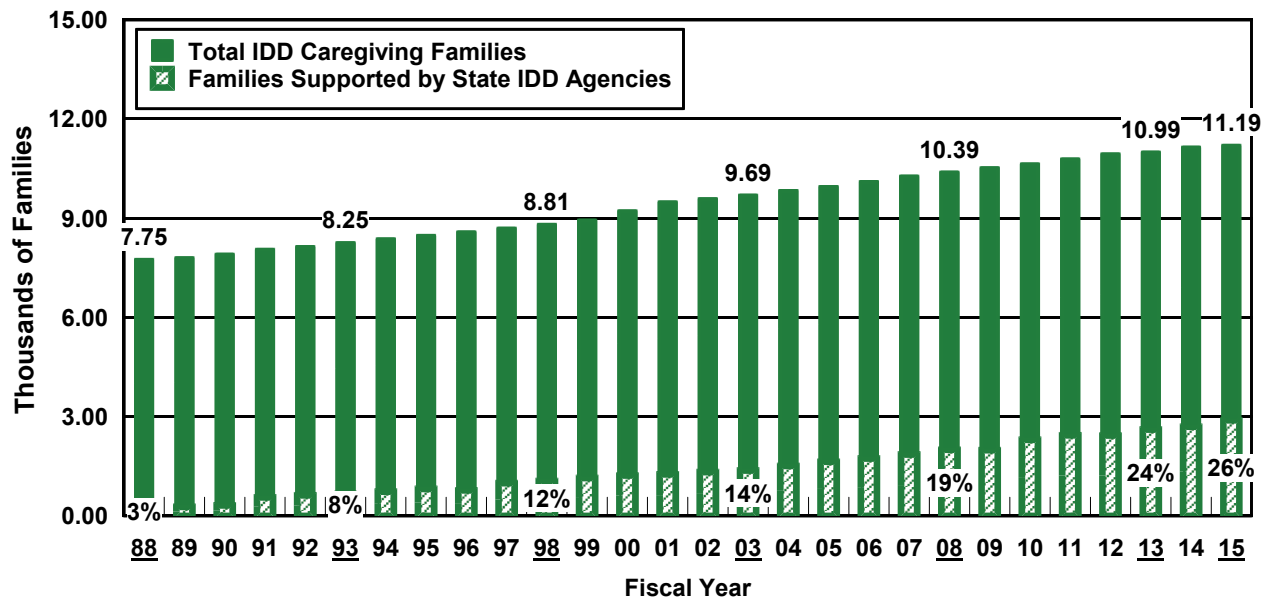
ESTIMATED NUMBER OF INDIVIDUALS WITH IDD BY AGE GROUP LIVING WITH FAMILY CAREGIVERS: FY 2015



TOTAL: 11,193 PERSONS

Braddock et al. 2016, based on Fujiura 2008, 2012

ESTIMATED NUMBER OF IDD CAREGIVING FAMILIES AND FAMILIES SUPPORTED BY IDD AGENCIES: FY 1988-2015



6 Source: Braddock et al., Coleman Institute and Department of Psychiatry, University of Colorado, 2017.